

PERSON COUNTY BOARD OF COMMISSIONERS
MEMBERS PRESENT

FEBRUARY 24, 2014
OTHERS PRESENT

Jimmy B. Clayton
Kyle W. Puryear
B. Ray Jeffers
Frances P. Blalock
David Newell, Sr.

Heidi York, County Manager
C. Ronald Aycock, County Attorney
Brenda B. Reaves, Clerk to the Board

The Board of Commissioners for the County of Person, North Carolina, met in recessed session on Monday, February 24, 2014 at 8:00 am in the Commissioners' meeting room in the Person County Office Building for the purpose of a joint session meeting with the Economic Development Commission.

Chairman Clayton called the recessed meeting to order. Commissioner Newell was absent.

A **motion** was made by Vice Chairman Jeffers and **carried 4-0** to immediately relocate the joint session meeting to room 166 in the County Office Building.

Chairman Clayton reconvened the meeting at 8:04 am in room 166 and led invocation.

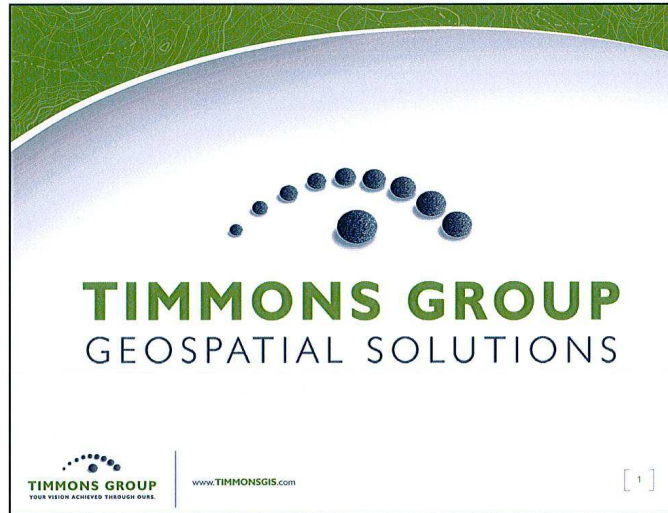
In attendance at the joint session were the following:

Chairman Clayton, Vice Chairman Jeffers and Commissioners Puryear, and Blalock, City of Roxboro's Mayor, Marilyn Newell, County Manager, Heidi York, City of Roxboro Manager, Steven Steese, Piedmont Community College (PCC) President, Dr. Walter Bartlett, Chamber of Commerce Chairman Derek Sims, Roxboro Development Group Chairman Will Carver, Director of PCC's Small Business Center, Randy Reynolds and citizen representative, Kenneth Perry. Others present were Economic Development (ED) Director, Stuart Gilbert, ED Administrative Assistant, Sherry Wilborn and Clerk to the Board of Commissioners, Brenda Reaves. Commissioner Newell arrived to the joint meeting at 8:11 am.

UPDATE ON GIS AND BROADBAND PROJECTS:

Randy Reynolds, Economic Development Commission Chairman introduced the representatives from the Timmons Group and ECC Technologies and asked them to proceed with their presentations to the group.

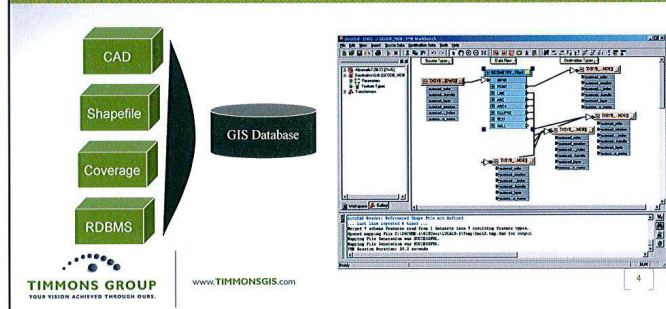
Mr. Brian O'Kane and Mr. Mike Solomon of the Timmons Group gave the group the following presentation:

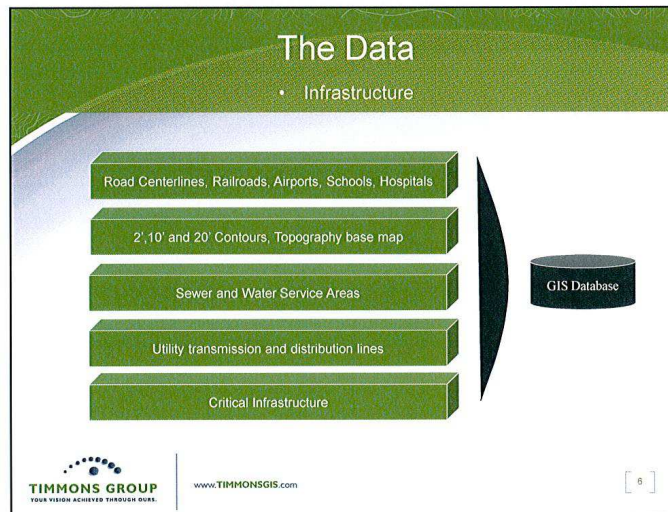
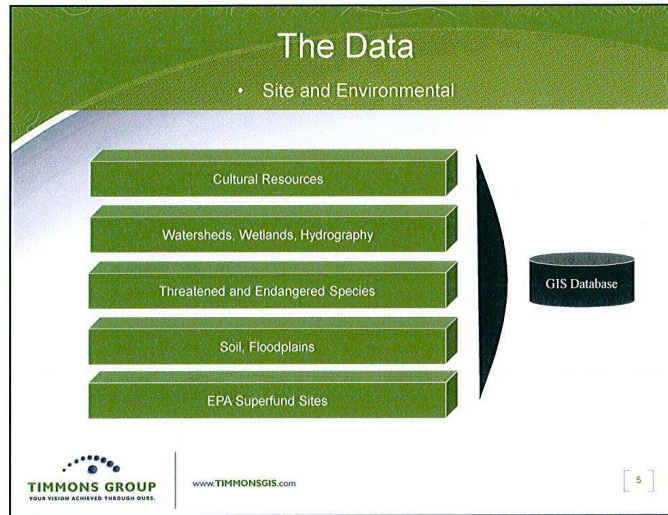


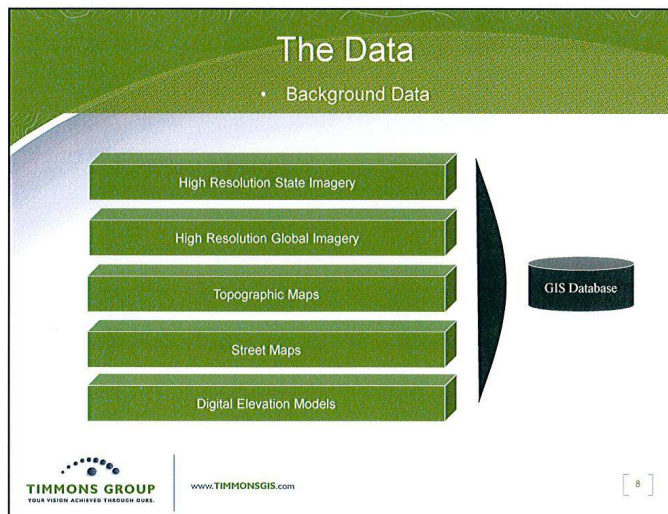
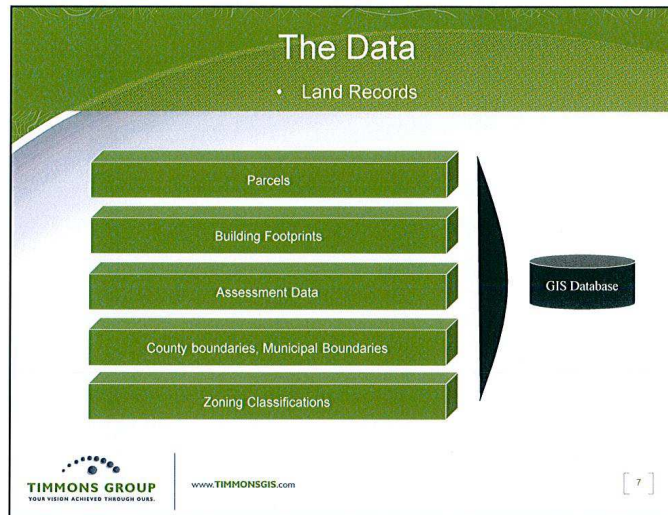
"So, what do you do?"

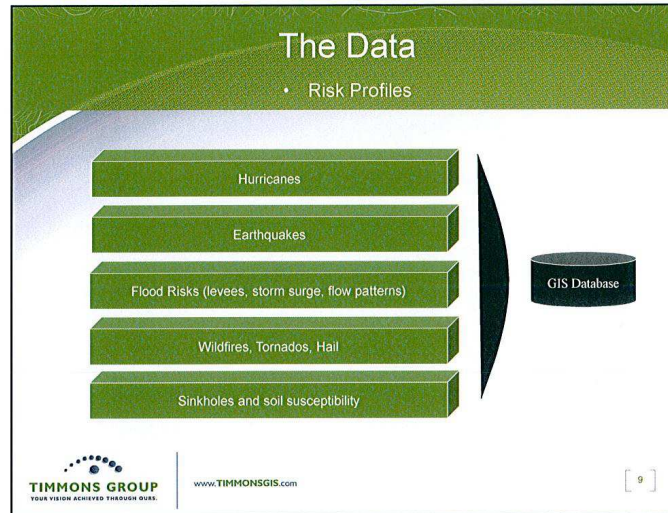
Data Collection and Modeling

- Data Collection and Aggregation
- Data Model Development
- Annual data collection









Website Development

- Private Access

The screenshot shows a web browser window with a login form. The text 'Please Login to Access The Person County GIS Viewer' is centered at the top. Below it are two input fields: 'Username' and 'Password'. A 'Login' button is positioned below the password field.

Please Login to Access The Person County GIS Viewer

Username

Password

Login

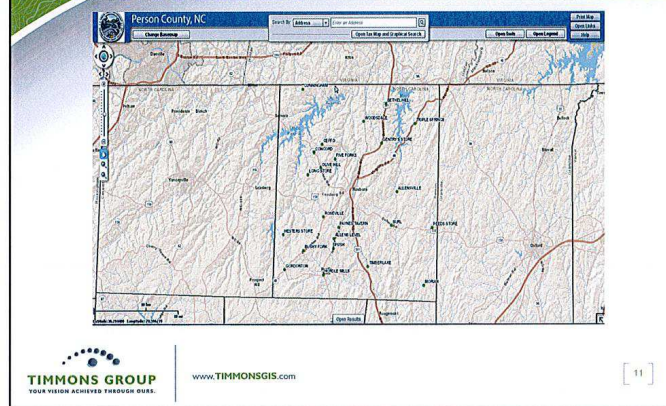
TIMMONS GROUP
YOUR VISION ACHIEVED THROUGH DATA

www.TIMMONSGIS.com

[10]

Website Development

- Ease and Speed of Use

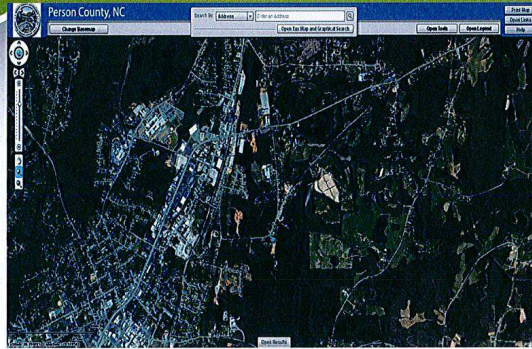


Website Development

- Annotation on the Map



Website Development



TIMMONS GROUP
YOUR VISION ACHIEVED THROUGH DATA

www.TIMMONSGIS.com

[13]

Conclusion



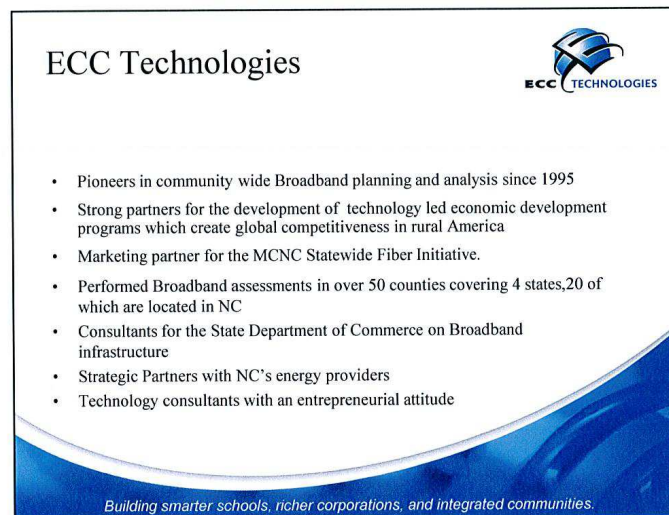
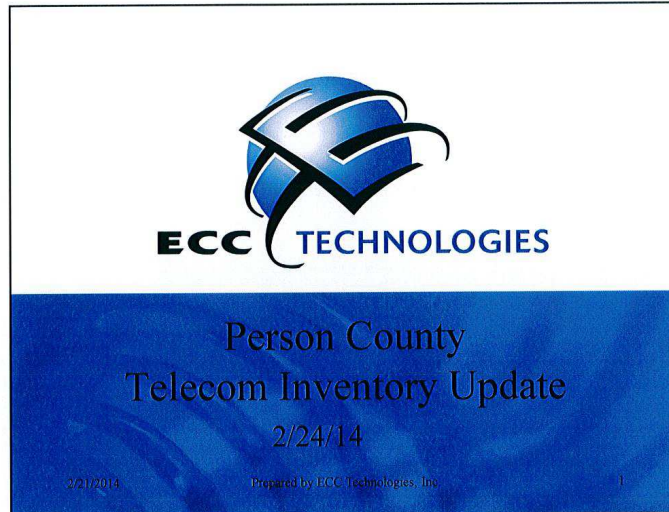
TIMMONS GROUP
GEOSPATIAL SOLUTIONS

TIMMONS GROUP
YOUR VISION ACHIEVED THROUGH DATA

www.TIMMONSGIS.com

[14]

Mr. Kurt Frenzel and Mr. Joe Starks with ECC Technologies gave the group the following presentation:



Our work in NC



Inventory Studies, Fiber Assessments and other projects support many entities across the State

- NC Department of Commerce
- Individual counties
- MCNC
- Duke Energy
- City of Raleigh
- ARC (rural funding / grant source)
- Greenfield Consulting (ED site consulting org)
- The Timmons Group (ED site consulting org)
- Working with various Electrical Coops

Building smarter schools, richer corporations, and integrated communities.

Community involvement in Broadband and Telecommunications



- 10 years ago thought to be someone else's problem
- Communities are:
 - Marketing their strengths and working on weaknesses
 - Taking a leadership role to develop strategies and plans
 - Becoming effective at developing Public Private Partnerships (PPP)
- Without local involvement rural areas are being left behind – no ROI for the incumbents
- We still have the Digital Divide with 18 million people in rural areas with no or limited access while our cities working on gigabit solutions

Building smarter schools, richer corporations, and integrated communities.

The Importance of Broadband



- State of NC 10 Year Jobs Plan – Broadband listed under Rural Prosperity
- Broadband is a major component that impacts the economic and global competitiveness of a community
- Broadband helps to level the playing field for rural areas when they have it but widens the gap if they do not
- Broadband impacts home values and in many cases impacts decisions on which home gets purchased
- Broadband impacts all aspects of our life

Building smarter schools, richer corporations, and integrated communities.

Importance of Broadband



National Priorities					
Health Care	Energy/Environment	Education	Government Operations	Economic Opportunity	Public Safety
<ul style="list-style-type: none"> • Electronic health records • Remote/home monitoring • Mobile monitoring • Telemedicine • Health information exchange 	<ul style="list-style-type: none"> • Smart grid • Smart home applications • Smart transportation • Telework 	<ul style="list-style-type: none"> • American Graduation Initiative • STEM • Nat'l Ed Tech Plan • eBooks and content • Electronic student data management 	<ul style="list-style-type: none"> • Service delivery and efficient government • Improved performance • Transparency • Civic engagement • Policy 	<ul style="list-style-type: none"> • Job creation and economic development • Job training and placement • Community development 	<ul style="list-style-type: none"> • Interoperable mission critical voice and broadband network • Next-gen 9-1-1 • Alerts • Cybersecurity
High-speed connectivity		Universal access		Ubiquitous adoption	

Building smarter schools, richer corporations, and integrated communities.

Broadband Issues in Rural Communities



- Lack of investment by incumbents
- Antiquated Equipment and Cable Plant
- Lack of Redundancy and Diversity
- Lack of Infrastructure Development
 - Particularly Fiber Cable
 - Perceived by the industry as having insufficient market demand
 - Doesn't fit Business Model for a Return of Investment (ROI) of 3 Years
- Limited Competition resulting in higher prices

Rural communities are being left behind in the Global Economy

Building smarter schools, richer corporations, and integrated communities.

ECC's Broadband Inventory for Person County



We have ;

- Inventoried Broadband infrastructures and service throughout the County
- Created a GIS based mapping tool for County Planning - A blueprint of what the county looks like today, the ability to model for tomorrow
- The Inventory has identified strengths and weaknesses within the County
 - We will market the strengths while we develop programs to address the weaknesses

Building smarter schools, richer corporations, and integrated communities.

ECC's Broadband Inventory for Person County



The Inventory;

- Provides telecommunications related marketing information for economic development (focus sites)
- Allows the County to model Broadband infrastructure for potential new business and other entities
- Lays the groundwork for improvement plans and grant opportunities
- Serves as a foundation for technology led development culture

Building smarter schools, richer corporations, and integrated communities.

Sources of Information



- Telecom Providers: Identify providers, Interviews and Questionnaire
- Telecommunication industry professionals: outside plant engineers and copper and fiber plant engineers.
- Industry Researchers: GeoTel's data sets included information from telecommunication providers, Telcordia industry databases
- Public Information: FCC, NC Broadband (formerly e-NC), and the NCTIA
- Other Resources: Provider websites

Building smarter schools, richer corporations, and integrated communities.

The inventory involved



Providers

- ILECs
- CLECs
- Cable Providers
- Network Service Providers
- Wireless System – Cellular, WISPs and Satellite Technology
- ISP – land line and wireless

Building smarter schools, richer corporations, and integrated communities.

Information Gathered included



- Contact Information
- Provider Territories and Services
- Central Office – type of switches
- Fiber Optic & Coaxial Cabling
- Remote Terminals
- Wireless Towers
- Number of Customers
- Future development Plans

Building smarter schools, richer corporations, and integrated communities.

Owners of Broadband and Fiber Cable Infrastructure



ILECS

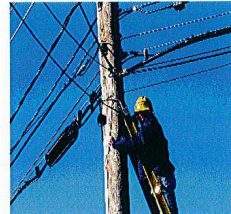
- CenturyLink

Cable TV

- Charter

Others

- AT&T (long haul)
- MCNC – Broadplex, RST & others
- Person County



Building smarter schools, richer corporations, and integrated communities.

What did we find?



- Most of the County is served with pockets of unserved
- Cable TV based infrastructure is widely available in the developed areas
- Tele fiber and DSL is also widely available
- Fiber owned by others is also present in the County
- MCNC Statewide fiber backbone runs through the County and is an Open Access Model
- MCNC fiber can be a strong foundation to launch economic development opportunities from



Building smarter schools, richer corporations, and integrated communities.

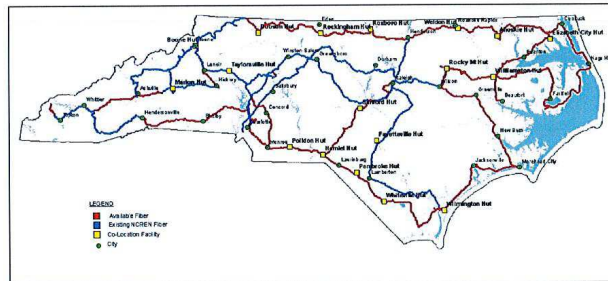
MCNC Fiber Project



- State wide -1,800 Miles Routes through 82 Counties
- Awarded \$140M Broadband Funds with the help of Golden Leaf
- MCNC operates the NCREN
- Fiber optic based – 144 strands backbone
- Majority installed underground, and overhead as needed
- Dark fiber only, they will not compete with the service providers
- Allows new providers into new markets!

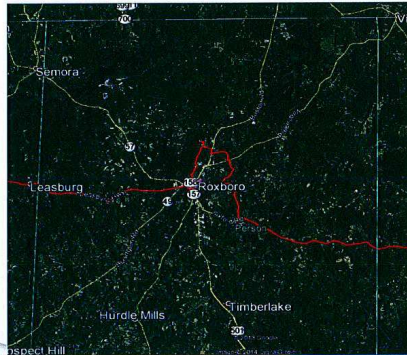
Building smarter schools, richer corporations, and integrated communities.

MCNC Fiber Backbone



Building smarter schools, richer corporations, and integrated communities.

MCNC Fiber in Person County



Building smarter schools, richer corporations, and integrated communities.

Use of this study for Economic Development



- Educate Economic Development Professionals
- Develop Site Telecommunication profiles
- Use information in New Business meetings, RFI responses and websites
- Identify sites that lack infrastructure
- Develop Technology Led Vision

Building smarter schools, richer corporations, and integrated communities.

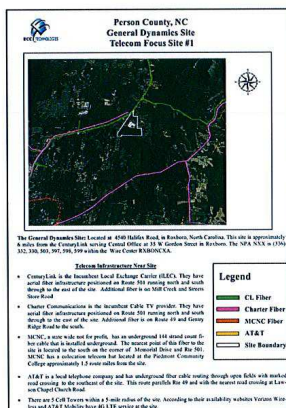
Economic Dev Site Profiles

Some of these are strengths

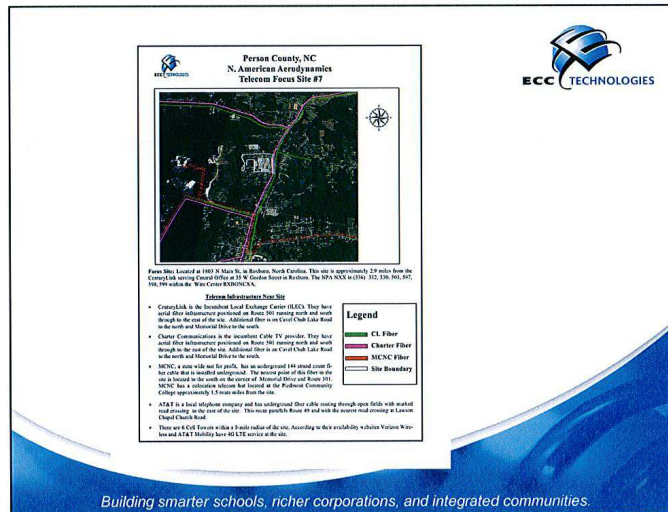
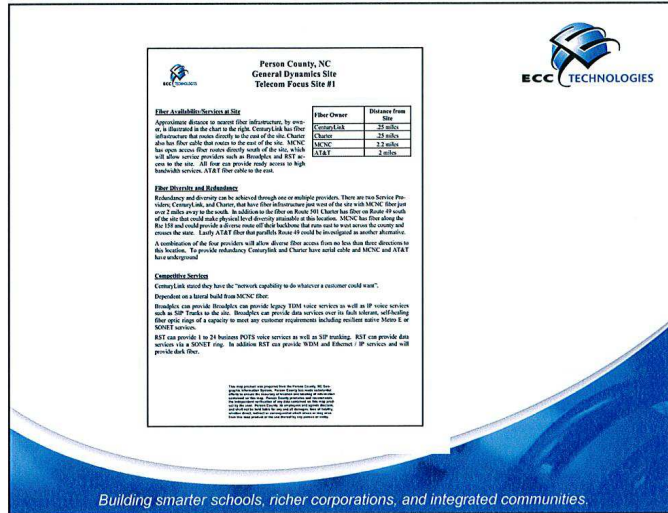



- County selected 10 Sites – used mapping info to help select
- Detailed inventory and analysis for each site
- Looked for owners of fiber, distance to site, infrastructure redundancy and diversity
- Identify service capabilities at site
- Develop cut sheet for marketing of site

Building smarter schools, richer corporations, and integrated communities.




Building smarter schools, richer corporations, and integrated communities.





Person County, NC
N. American Aerodynamics
Telecom Forum Site #7



Fiber Availability/Services at Site

Approximate distance to nearest fiber infrastructure, by route as is shown in the chart to the right. Consistent link fiber infrastructure that routes directly to the east of the site. Charter has fiber that routes to the east of the site. MCNC has fiber that routes directly to the east of the site, which will allow service providers such as Broadplex and RST access to the site. All four can provide ready access to high-bandwidth services. AT&T fiber cable to the west.

Fiber Owner	Distance from Site
Consistent Link	1 mile
Charter	1 mile
MCNC	1.5 miles
AT&T	3 miles

Fiber Diversity and Redundancy

Redundancy and diversity can be achieved through use of multiple providers. There are two Service Providers, Consistent Link and Charter, that have fiber infrastructure bordering the site to the east with MCNC fiber to the west. Consistent Link and Charter have fiber approaching the site from different directions making physical level diversity readily achievable at this location. In addition MCNC has fiber along the I-85 and could provide a diverse route of their backbone that runs east to west across the county and around the site. AT&T fiber also routes near Route 49 to the east.

A combination of the three providers will allow diversity that means there is no one that does dominate in this location. In terms of redundancy Consistent Link and Charter have separate aerial cables on the same route but independent networks and MCNC and AT&T have underground.

Consistent Services


Consistent Link stated they have the "network capability to do whatever a customer could want".

Dependent on a lateral build from MCNC fiber:

Broadplex can provide Broadplex can provide legacy TDM voice services as well as IP voice services such as SIP Trunking to the site. Broadplex can provide data services over its dark network, utilizing fiber optic rings of capacity to meet any customer requirements including resilient native Metro E or SONET services.

RST can provide 1 to 24 business POTS voice services as well as SIP trunking. RST can provide data services via a SONET ring. In addition RST can provide WDM and Ethernet IP services and will provide dark fiber.

Building smarter schools, richer corporations, and integrated communities.



Questions?

Building smarter schools, richer corporations, and integrated communities.

The group received the information from the presentations and welcomed the opportunity to market Person County to the world through technology aided databases with mapped site specific data layers for Person County parcels including power, fiber, water and sewer, etc. that prove to be a valuable resource for the state and potential recruiting efforts for industry. Mr. Gilbert has the ability as the economic development director to update the website through the technology company teams to provide fast response to industry representatives looking at Person County as a potential site to locate and/or expand business.

RECESS

A **motion** was made by Vice Chairman Jeffers, and **carried 5-0** to recess the joint session meeting at 9:07 am. The Board of Commissioners returned to their usual board room and reconvened the regular meeting at 9:17 am.

Chairman Clayton called the meeting to order, led invocation and asked Vice Chairman Jeffers to lead the Pledge of Allegiance.

DISCUSSION/ADJUSTMENT/APPROVAL OF AGENDA:

A **motion** was made by Vice Chairman Jeffers and **carried 5-0** to add to the agenda an item for an update and request for the Person County Senior Center by the Kerr Tar Council of Government Executive Director, Diane Cox.

A **motion** was made by Commissioner Puryear and **failed 2-3** to add to the agenda an item for discussion for a joint session meeting with the City of Roxboro. Commissioners Puryear and Newell voted in favor of the motion. Chairman Clayton, Vice Chairman Jeffers and Commissioner Blalock voted in opposition to the motion.

A **motion** was made by Vice Chairman Jeffers and **carried 4-1** to add to the agenda a Closed Session for attorney consultation. Commissioner Puryear cast the lone dissenting vote.

It was the consensus of the Board to approve the agenda as adjusted.

RECOGNITIONS:

Chairman Clayton read and presented a Resolution of Appreciation to each Person County retiree, Blanche Clayton, Barbara Lynn Fuller, Linda Faye Gryder, and Wanda Rogers.

RESOLUTION OF APPRECIATION

WHEREAS, Blanché Clayton has served the people of Person County during her tenure as an Income Maintenance Caseworker II at the Department of Social Services; and

WHEREAS, Blanché Clayton has served the citizens of Person County with honor, integrity, sincerity and dedication, providing accurate, concise services for twenty-eight years, December 1985 – November, 2013; and

WHEREAS, Blanché Clayton has earned the respect and admiration of all who have known her and worked with her throughout her career; and

WHEREAS, the County of Person recognizes the many contributions Blanché Clayton has made to the County and offers her sincere best wishes for her retirement.

NOW, THEREFORE, I, Jimmy B. Clayton, Chairman of the Person County Board of Commissioners, do hereby extend this Resolution of Appreciation to Blanché Clayton for continually striving to make Roxboro and Person County a better place to live and work.

Adopted this, the 24th day of February, 2014.



Jimmy B. Clayton
Jimmy B. Clayton, Chairman
Person County Board of Commissioners

Attest:

Brenda B. Reaves
Brenda B. Reaves
Clerk to the Board of Commissioners

February 24, 2014

RESOLUTION OF APPRECIATION

WHEREAS, Barbara Lynn Fuller has served the people of Person County during her tenure as a Physical Therapist Assistant II at the Health Department; and

WHEREAS, Barbara Lynn Fuller has served the citizens of Person County with honor, integrity, sincerity and dedication, providing accurate, concise services for five years, February 2009 – February 2014; and

WHEREAS, Barbara Lynn Fuller has earned the respect and admiration of all who have known her and worked with her throughout her career; and

WHEREAS, the County of Person recognizes the many contributions Barbara Lynn Fuller has made to the County and offers her sincere best wishes for her retirement.

NOW, THEREFORE, I, Jimmy B. Clayton, Chairman of the Person County Board of Commissioners, do hereby extend this Resolution of Appreciation to Barbara Lynn Fuller for continually striving to make Roxboro and Person County a better place to live and work.

Adopted this, the 24th day of February, 2014.



Jimmy B. Clayton
Jimmy B. Clayton, Chairman
Person County Board of Commissioners

Attest:

Brenda B. Reaves
Brenda B. Reaves
Clerk to the Board of Commissioners

February 24, 2014

RESOLUTION OF APPRECIATION

WHEREAS, Linda Faye Gryder has served the people of Person County in many capacities during her tenure working for Person County, most notably known as the Assistant Register of Deeds; and

WHEREAS, Linda Faye Gryder has served the citizens of Person County with honor, integrity, sincerity and dedication, providing accurate, concise services for thirty-four years, November 1979 – February 2014; and

WHEREAS, Linda Faye Gryder has earned the respect and admiration of all who have known her and worked with her throughout her career; and

WHEREAS, the County of Person recognizes the many contributions Linda Faye Gryder has made to the County and offers her sincere best wishes for her retirement.

NOW, THEREFORE, I, Jimmy B. Clayton, Chairman of the Person County Board of Commissioners, do hereby extend this Resolution of Appreciation to Linda Faye Gryder for continually striving to make Roxboro and Person County a better place to live and work.

Adopted this the 24th day of February, 2014.



Jimmy B. Clayton
Jimmy B. Clayton, Chairman
Person County Board of Commissioners

Attest:

Brenda B. Reaves
Brenda B. Reaves
Clerk to the Board of Commissioners

February 24, 2014

RESOLUTION OF APPRECIATION

WHEREAS, Wanda Rogers has served the people of Person County in many capacities during her tenure working for Person County, most notably known as the Director of Person Industries; and

WHEREAS, Wanda Rogers has served the citizens of Person County with honor, integrity, sincerity and dedication, providing accurate, concise services for thirty-two years, December 1984 – February 2014; and

WHEREAS, Wanda Rogers has earned the respect and admiration of all who have known her and worked with her throughout her career; and

WHEREAS, the County of Person recognizes the many contributions Wanda Rogers has made to the County and offers her sincere best wishes for her retirement.

NOW, THEREFORE, I, Jimmy B. Clayton, Chairman of the Person County Board of Commissioners, do hereby extend this Resolution of Appreciation to Wanda Rogers for continually striving to make Roxboro and Person County a better place to live and work.

Adopted this the 24th day of February, 2014.



Jimmy B. Clayton
Jimmy B. Clayton, Chairman
Person County Board of Commissioners

Attest:

Brenda B. Reaves
Brenda B. Reaves
Clerk to the Board of Commissioners

February 24, 2014

INFORMAL COMMENTS:

The following individuals appeared before the Board to make informal comments:

Mr. Leigh Woodall of 200 Reade Drive, Roxboro advocated for two road projects to the Board of Commissioners and to the NCDOT representatives in the audience for consideration for funding. The first road request was for the paving of Frogboro Road that serves Person and Caswell counties and in close proximity to Lake Roxboro. The second road project related to the four-lane of 501 North to the Virginia line noting the first phase is currently funded and in construction with phase two currently unfunded.

Former Commissioner, Mr. Samuel Winstead of 101 Sam's Ham Road, Leasburg requested assistance from the Board and the NCDOT representatives in the audience to pave three-tenths of a mile of Frogboro Road in Person County that runs into Caswell County.

Mr. Phillip Wade of 338 Roxboro Lake Road, Leasburg and Mayor of Frogboro stated his hopes to get Frogboro Road paved.

Representative Winkie Wilkins of 210 Fair Oaks Drive, Roxboro stated he had heard the request from former commissioner, Sam Winstead and had gathered information through discussion with NCDOT staff that estimated \$275,000 costs to pave and maintain the three-tenths of a mile of Frogboro Road noting using the criteria presently used by NCDOT, Frogboro Road did not rate well.

Ms. Diane Fox of 1870 Edwin Robertson Road, Roxboro and Vice President of the Person County Historical Society appeared before the Board to request help in finding another location due to the Senior Center building no longer being able to be occupied. Currently the Person County Historical Society office is located in the lower level of the Senior Center and is not charged any rent.

DISCUSSION/ADJUSTMENT/APPROVAL OF CONSENT AGENDA:

A **motion** was made by Vice Chairman Jeffers and **carried 5-0** to approve the Consent Agenda with the following items:

- A. Minutes of January 21, 2014,
- B. Minutes of February 3, 2014,
- C. Budget Amendment 11, and
- D. ABC Board adoption of Person County Travel Policy effective 9/26/2011.

CHANGES TO NCDOT SECONDARY ROADS PROGRAM:

Division Maintenance Engineer, Brandon Jones, on behalf of NCDOT Division 5/District 2 presented changes to the NCDOT's Secondary Roads Program 2013-2014.

Division Engineer, Wally Bowman, P.E., Deputy Division Engineer, Joey Hopkins, P.E., and Person County Maintenance Engineer, Anthony Talley was also present.

Mr. Jones stated NCDOT has focused on providing more strategic transportation investments and funding of the secondary road program has decreased dramatically.

House Bill 817 requires NCDOT to develop a statewide priority list for the remaining state maintained unpaved secondary roads as well as provides a non-recurring \$15 million appropriation for the Fiscal Year 2013-2014 shared statewide distributed by county based on the traditional formula using county pro-rata share of secondary road mileage.

House Bill 817 also provides an additional \$12 million of recurring annual appropriation which will be used to fund the paving of roads from a statewide paving priority list that is yet to be established. County Commissioners will be notified should a project be selected in Person County.

Mr. Jones presented this year's program to reconcile past Highway Fund allocations as a part of this fiscal year's \$15 million appropriation noting any active projects from previous Fiscal Year's funding will be continued.

**North Carolina Department of Transportation
Secondary Roads Program
Person County**

Secondary Road Fund Balances:

Funding Source	Funding Amount
Highway Fund: GS 136-44.6 FY 2013-2014:	\$133,034.49
Carry Forward from FY 2012-2013:	\$213,077.83
Highway Fund Total:	\$346,112.32

Secondary Road Fund Allocations:

Project	Funding Amount
Countywide Surveys, Plans & Right of Way:	\$42,000.00
Paved Road Improvements: *	\$304,112.32
Highway Fund Total:	\$346,112.32

Status of Previously Funded Active Projects:

Project	Status
SR 1558 (Chandler Road)	Complete
SR 1758 (Roy Rogers Road)	Complete
SR 1183 (Hall Road)	Complete
SR 1114 (Etzold Painter Road)	Complete
SR 1126 (Charlie Cash Road)	Under Construction - Pave 2014
SR 1199 (Vance Wrenn Road)	Under Construction - Pave 2014
SR 1569 (John Moore Road Road)	Build in 2014
SR 1437 (Quail Roost Road)	Build in 2014
SR 1566 (McFarland Road)	Unavailable Right of Way - Close

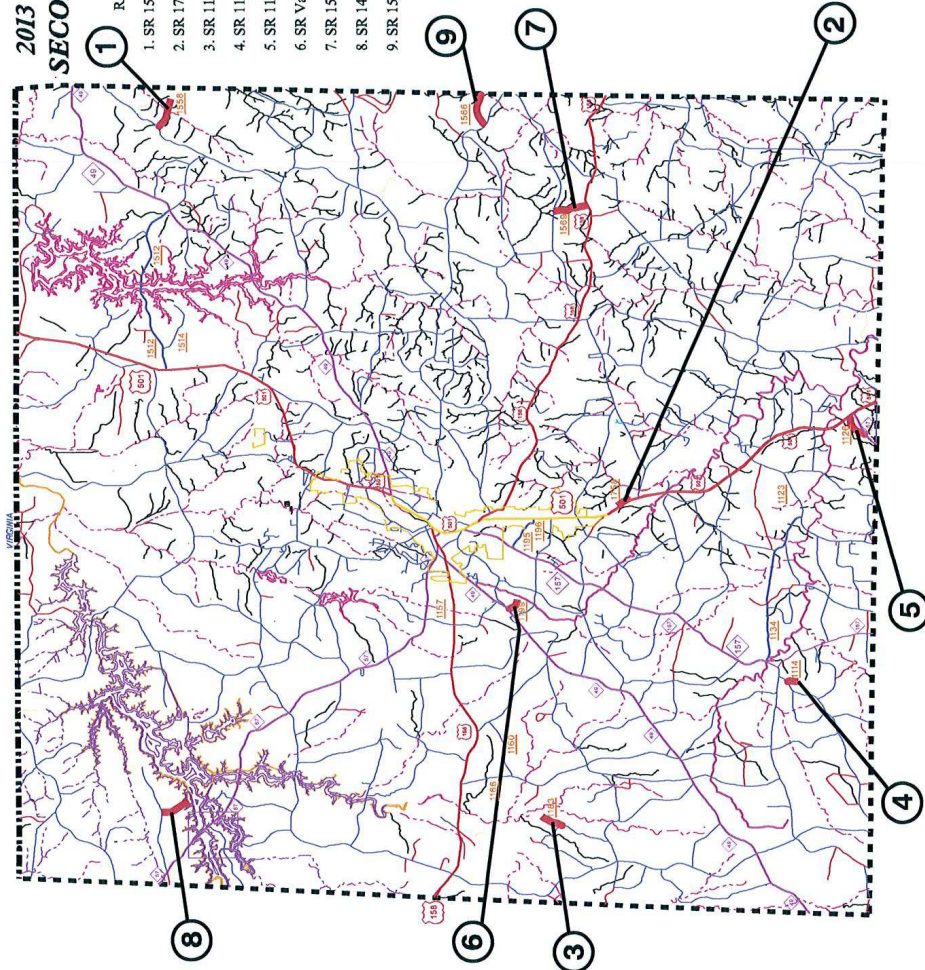
NOTES:

*Includes patching, widening and other improvements to various Secondary Roads.

*Balances from completed/closed projects will be used on Paved Road Improvements.

February 24, 2014

2013 – 2014 PERSON COUNTY SECONDARY ROAD PROGRAM



ROAD	STATUS
1. SR 1558 Chandler Road	Complete
2. SR 1758 Roy Rogers Road	Complete
3. SR 1183 Hall Road	Complete
4. SR 1114 Etzold Painter Road	Complete
5. SR 1126 Charlie Cash Road	Under Construction-Pave in 2014
6. SR Vance Wrenn Road	Under Construction-Pave in 2014
7. SR 1569 John Moore Road	Build and Pave Ends in 2014
8. SR 1437 Quail Roost Road	Build in 2014
9. SR 1566 McFarland Road	Right of Way Unavailable-Close

Mr. Jones addressed the request for paving Frogsboro Road noting that Frogsboro Road is currently ranked at 1,729 on the priority list noting traffic count, businesses, homes, churches, schools all factor into the ranking criteria. Mr. Jones confirmed the Caswell County portion of Frogsboro Road is paved.

Commissioner Newell asked Mr. Jones if there were any implications for road maintenance to be passed down to counties. Mr. Jones noted the state's responsibility for maintenance on state roads further noting counties could participate in funding road maintenance if desired.

VOLUNTEERS OF AMERICA SUPPORTIVE SERVICES FOR VETERANS AND FAMILIES:

Ms. Judy Pounds, Program Director with Volunteers of America Carolinas Supportive Services for Veterans and Families stated the goal of the Volunteers of America Supportive Services for Veteran Families (SSVF) Program is to promote housing stability among very low-income Veteran families who reside in or are transitioning to permanent housing by providing case management services and temporary financial assistance (TFA) for Program participants.

Volunteers of America Supportive Services for Veterans and Families has a VA grant of \$360,000.00 to serve the veterans in Person County and 14 other counties in Central North Carolina. The counties include Alamance, Caswell, Person, Chatham, Durham, Franklin, Granville, Guilford, Harnett, Johnston, Lee, Orange, Randolph, Rockingham, and Wake.

Ms. Pounds introduced Ms. Orlando Dawson, Case Manager assigned to Person County. Ms. Dawson will use office space provided by the Department of Social Services through Ms. Melinda Hudson.

Ms. Pounds noted SSVF is targeting veterans who served in Operation Iraq Freedom, Operation New Dawn, and Operation Enduring Freedom as well as who has served, including World War II, Korean, and Vietnam with an honorable or general discharge with an income 50% below the median.

Board members encouraged Ms. Pounds and Ms. Dawson to market SSVF through the county's veteran coordinator, Richard Vining and through groups such as Rotary, Kiwanis, Grange, Roxboro Jaycees and the Roxboro Elks.

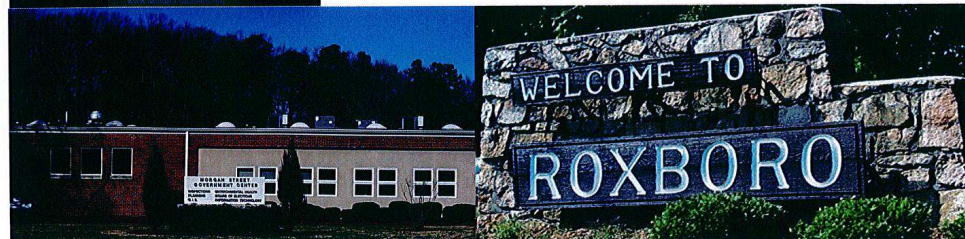
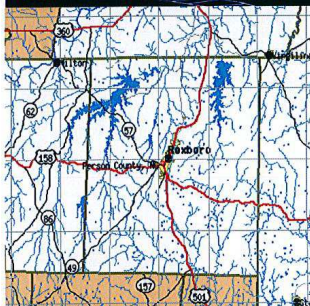
2013 STATE OF THE COUNTY HEALTH REPORT:

Leigh Ann Creson, Health Educator for the Person County Health Department presented to the Board the 2013 State of the County Health Report. Ms. Creson stated the report provides current mortality and morbidity data for the county. It also lists health priorities identified through the 2011 Community Health Assessment process and reveals progress made towards addressing those priorities in the past year. New and emerging issues in public health are addressed as well as other changes in the county that have the potential to impact the health of Personians.

Vice Chairman Jeffers asked Ms. Creson how many Personians have some form of health insurance. Ms. Creson noted that data is included in the large report that is located on the web site however she would email that information to him. Ms. Creson stated the web site is health.personcounty.net under the health data/community resources link.

Commissioner Blalock asked Ms. Creson if the Health Strategic Plan was completed. Ms. Creson noted it is not yet completed with another meeting scheduled for mid March.

A summary of the 2013 State of the County Health Report as presented to the Board is below.



Person County **2013** **State of the County** **Health Report**

Prepared by:
 Person County Health Department
 355 South Madison Blvd.
 Roxboro, NC 27573
 (336) 597-2204

<http://health.personcounty.net>
www.facebook.com/PCHealthDept

December 2013

Purpose

The 2013 State of the County Health Report provides updates on select mortality and morbidity data for Person County. This report also highlights progress made towards addressing health priorities identified in the most recent Community Health Assessment, which was produced in 2011. Other sections of the report feature information on the population, emerging issues in public health in the county over the past year, other influential factors potentially impacting the health and well-being of Personians, and information on how to get involved in 2014.

This report can be found at <http://health.personcounty.net> – Health Data and Community Resources – Health Data. Hard copies are available upon request at Person County Health Department.

Leading Causes of Death in Person County and North Carolina (2008-2012)

	Person County		North Carolina	
<i>Cause of Death (2008-2012)</i>	Rank	Rate	Rank	Rate
Cancer	1	195.4	1	175.9
Diseases of the Heart	2	182.8	2	174.4
Cerebrovascular Disease	3	74.7	4	45.1
Chronic Lower Respiratory Diseases	4	52.8	3	46.6
All Other Unintentional Injuries	5	28.9	5	29.4
Diabetes	6	28.5	7	21.8
Alzheimer's Disease	7	24.8	6	29.3
Pneumonia and Influenza	8	20.3	8	18.0
Unintentional Motor Vehicle Injuries	9	18.0	9	14.3
Septicemia	10	17.8	10	13.4
<small>Data Source: North Carolina State Center for Health Statistics (NCSCHS); 2014 County Health Data Book Notes: Rate = Number of events per 100,000 population, where the Standard = Year 2000 US Population. Leading causes of death are ranked according to rate, which are age-adjusted. Figures in Bold type indicate causes of death for which the Person County rate exceeds the comparable rate for the state as a whole.</small>				

Leading Causes of Death in Person County and North Carolina (2008-2012) continued

When comparing 2008-2012 data for leading causes of death to that of 2007-2011, the rankings remained about the same with the exception of pneumonia/influenza and unintentional motor vehicle injuries. All of Person County's death rates, except for all other unintentional injuries and Alzheimer's Disease, were above the state's rates for 2008-2012. In spite of this, death rates for all leading causes of death in the county, except pneumonia/influenza, had decreased from 2007-2011 to 2008-2012.

One significant change revealed in the data from the aforementioned time periods is that Alzheimer's Disease ranked amongst the top 10 leading causes of death in Person County. In 2006-2010, Alzheimer's Disease was the 11th leading cause of death. For 2007-2011 and 2008-2012, it moved up in the rankings to #7. However, the death rate for Alzheimer's Disease was below the state's rate for both the 2007-2011 and 2008-2012 time periods.

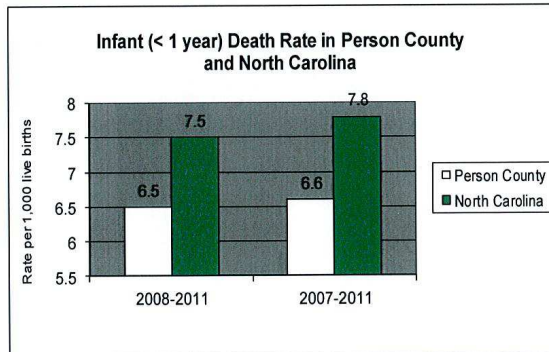
Leading sites of cancer deaths, ranked in descending order of death rates include: trachea/bronchus/lung; prostate; breast; colon/rectum/anus; and pancreas.

Person County Population At-A-Glance

July 1, 2012 POPULATION ESTIMATES* BY AGE, RACE AND SEX NC Resident Population Estimates as of July 1, 2012 (based on the 2010 census)						
	RACE/ETHNICITY				SEX	
	WHITE Non-Hispanic	AFRICAN AMERICAN Non-Hispanic	OTHER Non-Hispanic	HISPANIC	MALE	FEMALE
TOTAL						
39,268	26,430	10,764	434	1,640	19,101	20,167

*Based on population files obtained from the U.S. Census Bureau in collaboration with the National Center for Health Statistics

Person County Infant Death Rate Continues to Decrease



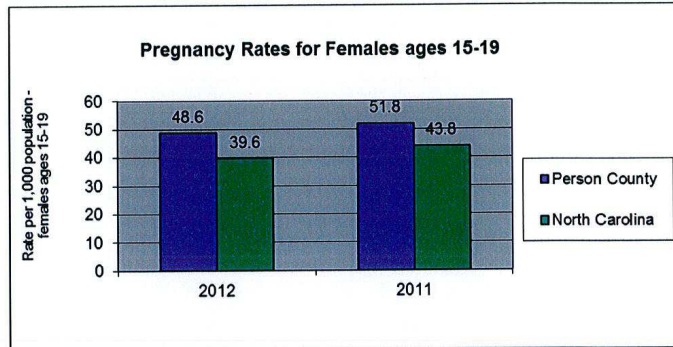
Person County's infant death rate continues to decrease as well as remain under the state's rate.

Data Source: North Carolina State Center for Health Statistics (NCSCHS); 2014 and 2013 County Health Data Books

Pregnancy Rate for Females Ages 15-19 On the Decline

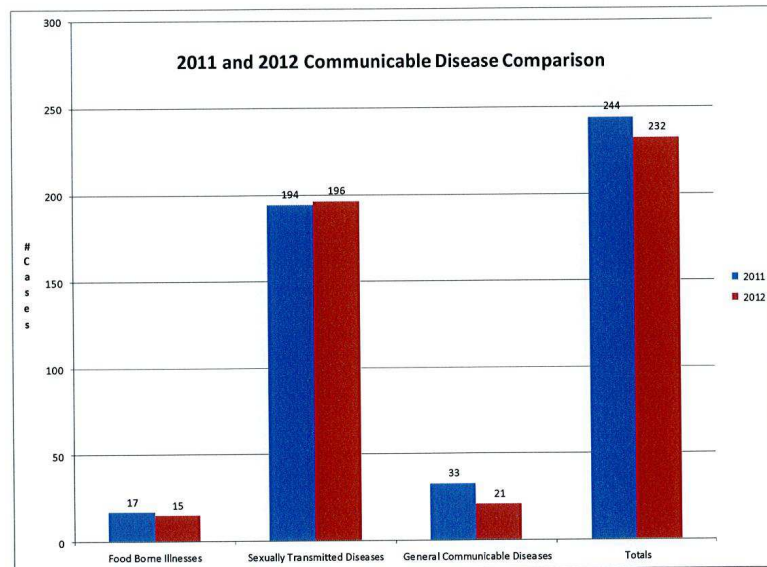
Person County's pregnancy rate for females ages 15-19 continues to decline even though it remains above the state's rate.

Notes: Total pregnancies represent the sum of all induced abortions, live births, and fetal deaths 20 or more weeks of gestation reported to the state. Not included are spontaneous fetal deaths (still births) occurring prior to 20 weeks gestation, which are not reportable to the state.



Data Source: North Carolina State Center for Health Statistics; 2014 County Health Data Book

Overall Cases of Communicable Diseases Down in 2012



Overall Cases of Communicable Diseases Down in 2012 continued

The data source for communicable diseases is Person County Health Department. Locally collected data has proven to be more accurate and updated than other sources. The Health Department classifies communicable diseases in 3 categories: Food Borne Illnesses, Sexually Transmitted Diseases (STDs) and General Communicable Diseases. There was a decrease in the total number of cases of communicable diseases from 2011 to 2012 as well as a decrease in the number of Food Borne Illnesses and General Communicable Diseases. There was an increase in STDs by 2 cases. Chlamydia accounted for 82% of the STDs. The majority of Food Borne Illnesses were attributed to Campylobacter Infection (46%) while 38% of General Communicable Disease cases were from Rocky Mountain Spotted Fever.



Addressing Health Priorities in Person

Chronic Disease (cancer, heart disease, stroke, diabetes) Overweight/Obesity

In 2013, the following efforts were made by the Health Department, Healthy Personians, and its many partners, including the Person County Medical Reserve Corps, to address these priority areas identified in the 2011 Community Health Assessment:

Physical Activity and Nutrition Prescription Pad Program — This program continued to be offered to Hispanic clients at Person County Health Department. Client's determined at risk for overweight or obesity were recruited into the program by the department's Foreign Interpreter. They were provided literal prescriptions for behaviors around healthy eating and physical activity to encourage a lifestyle that would help them work towards a healthier weight. Educational materials were provided to clients as well as follow-up upon return visits.

***Living Healthy Self-Management Program**— A Living Healthy program was conducted in the winter of 2013. The program was offered again in the fall but was cancelled due to low registration. This 6-week series was for anyone with a chronic health condition. It taught participants how to manage their condition through getting a good night's sleep, using action plans, being active, eating healthy, preventing falls, and much more.

***Living Healthy with Diabetes Self-Management Program**—Living Healthy with Diabetes was conducted in the spring and fall of 2013. This program, structured like Living Healthy, more specifically targeted people with Type II Diabetes. In addition to being taught many of the same concepts presented in Living Healthy, participants also learned about counting carbohydrates, glucose monitoring, preventing hypoglycemia, etc. for managing blood sugar levels.

**Information was sent to local health care providers on these programs to encourage patient referrals for participation.*

Carbohydrate Counting/Meal Planning Workshop — Two workshops for people with Type II Diabetes and caregivers were held. Participants were made aware of sources of carbohydrates; recommended amounts of carbohydrates, proteins and fats per meal and snack; and how to put together meals within those recommendations. Each workshop also consisted of hands-on practice with meal planning.



Addressing Health Priorities in Person continued

10-in-10 Weight Loss Challenge— A county-wide weight loss challenge was offered for 10 weeks in the spring of 2013. The purpose of the challenge was to encourage participants to lose weight safely by losing 1 pound per week for 10 weeks. Participation was required in teams of 3 people. Participants received tips and recipes weekly throughout the challenge via email. Cash prizes were awarded to teams and individuals meeting their weight loss goals. A new component was added to the challenge this year. In the fall, all participants losing at least 10 pounds during the challenge were provided an opportunity to win more cash prizes for keeping off at least 10 pounds.

5-in-5 Weight Loss Challenge — This challenge, modeled after the 10-in-10 Weight Loss Challenge, was piloted with county employees. Wellness Wednesday sessions were offered as extra support to participants during lunch hours.

Community Garden Project — Roxboro Community School and the Health Department collaborated on a community garden project. Resources through the Healthy Communities program and Nourishing North Carolina project assisted with the construction of a greenhouse and garden bed. This project has helped get healthy food into the mouths of people more at risk for health disparities. Numerous pounds of produce grown through this project have been donated to the Christian Help Center.



Person County Non-Smoking Ordinance— In January 2013, the Person County Board of Commissioners adopted a non-smoking ordinance prohibiting smoking within 50 feet of any recreation, health, and wellness facility. Designated smoking areas were established at each facility. The public was informed about the ordinance through a media campaign, the distribution of ordinance cards and signage at the various facilities.



Person County Farmer's Market Initiative — The following efforts were implemented in 2013 to help enhance the Person County Farmers' Market:

- A community survey was conducted along with focus groups to gather data on use of the market, market hours, items sold at the market, pricing, market promotion, etc. Data collected was provided to the Farmers' Market board along with suggested action items.
- Media campaigns and special events were held to encourage more participation in the market.
- The market implemented a Donation Station through a partnership with Farmer Foodshare. This program connects local farms with agencies that serve people with health disparities. Food and monetary donations were accepted. At the end of each market, monetary donations were used to purchase items from market vendors. Food donations made at each market were either given to the Christian Help Center or Person County Group Homes residential facilities. The Donation Station was coordinated by a Person County Medical Reserve Corps volunteer.
- Transportation was made available to Wednesday markets through PATS (Person Area Transportation System).
- Partners checked into making arrangements for the market to accept WIC vouchers. It was learned that the state was not permitting new markets to accept these vouchers in 2013. Setting the market up to participate in SNAP/EBT (Supplemental Nutrition Assistance Program/Electronic Benefits Transfer) was also explored. It was concluded that it would not be feasible for this market at this time.



Market Research Project — A market research project was conducted by Marshall Marketing, a research and consulting company. This involved a phone survey using a random digital dialing system. The survey gathered data on healthy eating and physical activity habits, use of recreational facilities, weight, resources needed for healthy living, use of media to inform residents about health, wellness and recreation programs, etc. This information will be used in 2014 to develop more targeted efforts and messages to Personians to encourage healthy behaviors.



Efforts supported through the Community Transformation Grant Project.

What's Been Happening in Person in 2013?

Emerging Issues in Public Health



West Nile Virus

Person County experienced its first West Nile Virus cases in the fall of 2013. In late September, a mare received a positive diagnosis for West Nile Virus, and in November, the first human case was diagnosed. The Health Department routinely issues media releases regarding vector borne diseases with prevention tips throughout the spring and summer months each year.

Government Shutdown

Due to the shutdown of the federal government, WIC had 28 participants that were placed on a waiting list (included women, infants, and children) from October 9—10, 2013. Out of those, 27 were printed Food Instruments and/or Cash Value Vouchers on October 11. Those participants who did not pick up their vouchers on October 11 had them mailed for up to 3 months depending on their eligibility. One participant did not receive anything because that participant was being breastfed.

Tdap Vaccination

The Health Department collaborated with Roxboro Community School and Person County Schools to make the Tdap (Tetanus, Diphtheria and Pertussis) vaccination available on-site at three different schools. Sixth grade students were the recipients of the Tdap vaccination.



TB Skin Testing

Person County Health Department has provided TB skin testing to residents of Person County Group Homes for many years. In efforts to provide more efficient services an arrangement was made between the Health Department and Group Homes to offer on-site TB skin testing and follow-up readings at their administrative office on a monthly basis. By offering this service in a familiar environment, it has made for a more comfortable situation for many residents who are often overwhelmed in public settings.

Flu Clinics

On-site flu clinics were offered in the fall of 2013 for employees of Person County Government, the City of Roxboro, Louisiana-Pacific, and Person County schools. Vaccinations were also provided at Cambridge Hills Assisted Living.

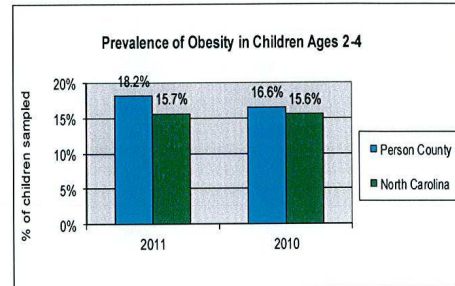
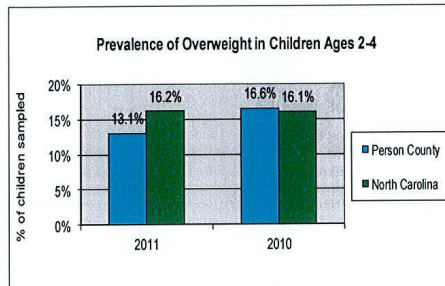


Electronic Medical Records

Person County Health Department implemented the billing management component of Patagonia Health in December 2012. The department increased its capacity to bill and receive payments from Medicaid and private insurance companies as well as provide service on a sliding fee scale. In July 2013, the electronic health record component of Patagonia was implemented. The clinic schedule was modified for a few months to allow time for employee training and proficiency. Clinics are currently back to normal scheduling.

Weighing In on Personians

County level data on overweight/obesity for both children and adults is limited. The source used by the Health Department to track data on children is NC-NPASS (North Carolina Nutrition and Physical Activity Surveillance System) which is maintained by the Nutrition Services Branch for the North Carolina Division of Public Health. NC-NPASS provides data on a relatively small sample size of children seen in public health sponsored programs such as WIC (Women, Infant, Children), child health clinics and some school based health centers. In recent years, NC-NPASS has only had data available for children ages 2-4. The following charts compare the prevalence of overweight and obesity in children ages 2-4 for 2010 (sample size—447) and 2011 (sample size—473):



Data from the Behavioral Risk Factor Surveillance System is no longer used to track overweight/obesity data for adults in Person County. The data is too broad to use as Person County is part of a 35 county sample. In 2013, the Health Department participated in a market research project which collected information from 300 residents over the age of 18 through a phone survey. Surveyors made a concerted effort to get a proportionate sampling of responses from both men and women, various age ranges, different ethnic backgrounds, and targeted zip codes representing all areas of the county. When respondents were asked a question in regards to what they had ever been told by a doctor about their weight, 32% responded that they were “overweight” while 3% said they were “obese”. Overweight/obesity data will be collected on a wider scale in 2014 through the community health assessment process.

Working Towards A Complete State of Well-Being

The World Health Organization defines health as a “state of complete physical, mental, and social well-being and not merely the absence of disease or infirmity”. There are many factors that can play a role, either directly or indirectly, in obtaining such a state of well-being. This section features some of the factors that have had the potential of impacting the health and well-being of Personians in 2013 in some way.

Social Media

Person County Health Department and Person County Medical Reserve Corps initiated the use of social media as a means to more effectively connect and communicate with the community. Find the Health Department at www.facebook.com/PCHealthDept and the Medical Reserve Corps at www.facebook.com/PCMRC.

Affordable Care Act/The Marketplace

The Health Department is a “Certified Application Counselor”. Three staff members have been trained to assist persons interested in obtaining insurance through The Marketplace. Assistance is available by appointment only.

Person County Medical Reserve Corps



Person County has increased its capacity for community resiliency through the growth of its Medical Reserve Corps. Since the 2012 SOTCH, the number of volunteers has doubled from 9 to 18. Throughout 2013, volunteers took advantage of numerous training and service opportunities. A partnership was formed with the American Red Cross. The ARC was generous enough to offer volunteers a Disaster Services Overview Training and a Psychological First Aid Course locally. One MRC volunteer made the Donation Station at the Person County Farmers' Market a reality by serving as the coordinator of this program. The Health Department continued to secure funding from the National Association of City and County Health Officials and the State of North Carolina to support MRC efforts.

Community Transformation Grant Project

Resources through the Community Transformation Grant Project (CTGP) were received again in 2013 to support policy, systems and environmental changes that support tobacco free-living, healthy eating, active living, and evidence-based clinical preventive services. This is part of a 5 year project that started in 2012. In 2013, CTGP funding supported work with the Person County Farmers' Market, a non-smoking ordinance affecting county recreation, health and wellness facilities, and a market research project.



Economic News

Person County has not been immune to the job losses in the textile, tobacco, and other manufacturing industries over the last decade. Still feeling the impacts from the Great Recession, Person County continues to flirt with double digit unemployment at around the same rate as 2012. As of June 30, 2013, Person County's average unemployment rate was 10.0%, a decrease of .40% over last year's rate of 10.4%, and 1.2% over the statewide average of 8.8%.

The slowdown in the national and global economies, the volatility of the stock markets, and fluctuations in gas and energy prices could pose adverse impacts to both the State as well as the County. The impact of the recession and credit crisis has taken a toll on businesses and industries in Person County. Fortunately most businesses and industries have been able to withstand this crisis so far without major layoffs or shutdowns. It appears that a recovery has begun, but the speed of that recovery will continue to impact the local economy.

Local manufacturing developments include the following ongoing projects:

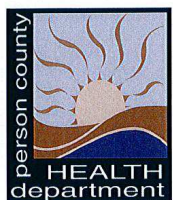
- GKN Drive Line CVI completed their \$3 million 47,000 square foot building expansion along with an additional \$20 million new equipment expansion and has hired the majority of their 138 new jobs.
- Diamond Candles opened a new manufacturing facility in Person County and as of October 2013 have two shifts of employees at their manufacturing operations with over 30 employees.
- Piedmont Filtration Systems is Person County's newest manufacturer and announced their new manufacturing facility earlier in 2013.
- The County is working with existing Person County manufacturers and is prepared to offer financial incentives if and when new jobs and investments are created.

Person County Economic Development Commission (EDC), the County's industrial recruitment arm and liaison with local industry, is an active member of the Regional Triangle Regional Partnership (RTRP). RTRP is headquartered in the state capital, Raleigh, and is a consortium of thirteen counties of central North Carolina. Its purpose is to promote and market the area including Person County to new and existing industrial concerns. The EDC also partners with the NC Department of Commerce, local utilities and other industrial allies to retain existing industries, promote expansion opportunities and to locate new industries to the area. The County continues to develop a diversified local economy and has a positive outlook for the future.

Help Make Life Better in Person



There are many opportunities for you to help make life better in Person. You can help address county health priorities by becoming involved with the Healthy Personians Partnership. Healthy Personians is a certified community-based partnership that strives to assist the residents of Person County with establishing and maintaining healthy lifestyles. The partnership started in 2000 as a means to address health priorities that were brought to light through the community health assessment process. Involvement with Healthy Personians can be through service on the advisory board, planning committee or a partner group. Partner groups include the Person County FAN (Fitness And Nutrition) Club and HIV Task Force.



In 2014, Person County Health Department will be recruiting partners to serve on a Community Health Assessment Team. This team will be responsible for working with a consultant to obtain and analyze county data. The ultimate goal of this process is to identify new health priorities for the county for the next 3 years and to develop a plan of action to address these areas.



Both medical and non-medical volunteers are needed to serve on the Person County Medical Reserve Corps. These volunteers are utilized during times of emergency as well as during everyday community health operations. PCMRC volunteers were involved in several initiatives in 2013 that helped address county health priorities.

For more information about getting involved with Healthy Personians, the 2014 Community Health Assessment Team or Person County Medical Reserve Corps contact LeighAnn Creson (Health Educator, Person County Health Department) at lcreson.pchd@personcounty.net or 336-597-2204 x2277.

Please visit us at:

<http://health.personcounty.net>

www.facebook.com/PCHealthDept

www.facebook.com/PCMRC

PERSON AREA TRANSPORTATION SYSTEM SAFETY PROGRAM PLAN:

Kathy Adcock, Person Area Transportation System (PATs) Manager, requested Board approval of the System Safety Program Plan (SSPP). Ms. Adcock noted the SSPP is a required safety review done by NCDOT that consist of a six core element assessment of PATs. The core elements included are 1) driver/employee, 2) driver training, 3) safety analysis, 4) drug and alcohol, 5) vehicle maintenance and 6) security. Ms. Adcock stated the assessment resulted in minor deficiencies to which PATs was given an allotted time to respond and correct such deficiencies. Ms. Adcock stated Person County's review has been completed and meets NCDOT's guidelines. Ms. Adcock requested Board approval of the SSPP.

A **motion** was made by Commissioner Blalock, and **carried 5-0** to approve the System Safety Program Plan for the Person Area Transportation System.

PROPOSAL TO SCHEDULE PERSON COUNTY'S NEXT REVALUATION FOR 2021:

Tax Administrator, Russell Jones told the Board General Statute 105-286 requires all counties in North Carolina conduct a revaluation of all real properties at least as often as every eight years (octennial cycle). While this is the minimum requirement, Mr. Jones noted many counties have, in the past, chosen to conduct revaluations more frequently, as allowed by General Statute 105-286(a)(3).

Mr. Jones stated Person County conducted its first shorter revaluation for 1989. After 1989, Person County continued to conduct four-year revaluations through 2005. Mr. Jones explained the shorter cycle revaluations were necessary because of the following:

- Rapid changes in the real estate market. Real estate values were increasing at a rate of 3-4% each year. Since all properties change value at different rates, revaluations are needed in a changing market to maintain equity.
- To avoid equalization with Public Service Companies. Since Public Service Companies are valued annually, counties are required to maintain a sales ratio above 90% in order to fairly assess all properties equally. With properties changing more than 3% each year, it was very easy to drop below a 90% sales ratio if a shorter revaluation cycle was not followed.

Mr. Jones recalled Person County's 2009 revaluation was delayed until 2013 due to economic uncertainties in the real estate market. Mr. Jones noted the County's next revaluation is currently scheduled for 2017 further noting Person County is experiencing very little change in value, and it appears that this will continue for many more months.

Mr. Jones stated since real estate values are basically stagnant (neither rising or declining), the County should consider conducting its next revaluation at eight years. By scheduling the next revaluation for 2021, Person County will:

- Save the expenses of an extra revaluation cycle (approximate saving of \$300,000).
- Keep the current values until 2021. Unless the real estate market starts changing, the current values will remain accurate.

Mr. Jones stated the tax office will continue to monitor the real estate market, and will alert the Board if the real estate market changes enough to indicate that a sooner revaluation is needed. If our sales ratio falls below 90% in either a 1st, 4th, or 7th year of the revaluation cycle, equalization will be applied to lower the tax liability of all Public Service Companies.

Mr. Jones requested the Board to adopt a Resolution Rescinding the Advancement Date of a Reappraisal of Property in Person County.

A **motion** was made by Commissioner Blalock, and **carried 5-0** to adopt a Resolution Rescinding the Advancement Date of a Reappraisal of Property in Person County which would set the next scheduled reappraisal of January 1, 2021.

Commissioner Puryear asked Mr. Jones about the bidding process for revaluation. Mr. Jones noted the revaluation process begins about two and one-half years before costing approximately \$300,000-\$350,000. Mr. Jones explained he has historically contracted with Pearson who has expertise in lake properties on a per day rate noting he has had a better product doing the work in-house.

**A RESOLUTION RESCINDING THE ADVANCEMENT DATE OF A REAPPRAISAL OF
PROPERTY IN PERSON COUNTY**

Whereas GS 105-286 mandates a reappraisal of property at least every eight years, and

Whereas GS 105-286(a)(3) Authorizes a Board of County Commissioners to advance the period so that a reappraisal occurs more often than every 8 years, and

Whereas Person County's last reappraisal occurred on January 01, 2013, and

Whereas Person County's next mandated eight year reappraisal is required for January 01, 2021, and

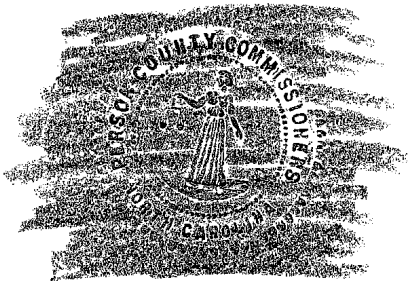
Whereas Person County had planned to have an advanced reappraisal effective for January 1, 2017, and

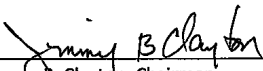
Whereas the Person County Board of Commissioners feel that a revaluation for January 1, 2017 is not justified at this time due to the expense of a more frequent revaluation, a stagnate real estate market, and that the 2013 tax assessments are fair and equitable.

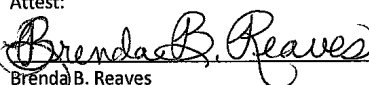
NOW THEREFORE BE IT RESOLVED BY THE BOARD OF COMMISSIONERS OF PERSON COUNTY THAT:

- 1- The scheduled reappraisal for an effective date of January 1, 2017 is hereby revoked and rescinded.
- 2- Pursuant to the authority granted in GS 105-286(a), the next scheduled reappraisal for Person County is set for an effective date of January 1, 2021, and Person County will return to a four year revaluation cycle thereafter.
- 3- A copy of this resolution shall be provided to the Property Tax Division of the North Carolina Department of Revenue and to the City of Roxboro.

Adopted this 24th day of February, 2014.




Jimmy B. Clayton, Chairman
Person County Board of Commissioners

Attest:

Brenda B. Reaves
Clerk to the Board of Commissioners

February 24, 2014

PUBLIC SAFETY COMMUNICATION SYSTEM:

Assistant County Manager, Sybil Tate reminded the Board a feasibility study to determine the total cost for the public safety and broadband project was funded in January. Ms. Tate said that Technology Systems Solutions (TSS Partners) has conducted the feasibility study and Mr. Frank Marum will present the final results of their research as well as answer questions about the public safety communication system. The Public Safety/Broad Feasibility Study for Person County follows:



Public Safety/Broadband Feasibility Study

For Person County, North Carolina

February 20, 14

February 24, 2014

Table of Contents

Executive Summary	1
Objective of the Feasibility Study	1
Feasibility	1
Estimated Costs	1
Expected Schedule	1
Public Safety/Broadband Feasibility Study	2
Objective of the Feasibility Study	2
Background	2
Methodology	2
Current Public Safety Network Status	3
Public Safety Network Solution	3
Broadband Network Solution	4
Public Safety Cost Estimate.....	6
Broadband Cost Estimate (Lightleap/NC Wireless).....	7
Cost Estimate Summary.....	8
Key Assumptions.....	9
Expected Project Schedule	10
Project Timeline	10
Public Safety Timeline	10
Broadband Timeline	10
Final Observations and Recommendations	11

February 20, 14

Executive Summary

Objective of the Feasibility Study

Prepare a feasibility study for design and construction of a Public Safety network upgrade as well as a Broadband system to provide service to un-served areas of Person County.

Feasibility

The objectives are achievable with some caveats. There are timeline risks related to the intervals required for completion of Environmental studies for tower sites and the ability to obtain 3 bids for the public safety RFP. Also the Broadband solution will require Microcells that were not included in the RFP response to reach remote areas due to obstruction from trees. Microcells are included in the estimate but vertical assets for the Microcells are excluded.

Estimated Costs

Based on industry experience with similar projects, the following is a summary of the total project costs:

Cost Element	Person County Expected Expenditure
Public Safety	\$4,170,000
Broadband	\$173,785
TOTAL	\$4,343,785

Expected Schedule

Based on recent experience with similar projects, the estimated schedule for Public Safety is 28 months. The Public Safety towers will be available for Broadband after 25 months.



Public Safety/Broadband Feasibility Study

Objective of the Feasibility Study

Prepare a feasibility study for design and construction of a Public Safety network upgrade as well as a Broadband system to provide service to un-served areas of Person County. The study will provide the following:

- An overview of the project;
- Estimated costs;
- Estimated timeline for completion;
- Key assumptions.

Background

The County plans to move forward with upgrading their Public Safety radio network to improve coverage and network reliability. The County has also decided to move forward with a program to bring Broadband service to un-served areas of the County. The Broadband program will utilize the new Public Safety tower sites to bring fixed wireless broadband to un-served areas. The County has selected NC Wireless LLC to offer LightLeap broadband service. Seven (7) un-served areas in the County have been identified by official data from the NC Department of Commerce. The County will provide NC Wireless with a Broadband grant contribution for 50% of the equipment cost and Public Safety tower access at no charge for the initial 5 years of the project.

Methodology

TSS Partners approached this project in three steps:

1. Understand the Person County current status and future plans for public safety and broadband through discussions with the County and Lightleap/NC Wireless staff.
2. Collect and analyze data from existing proposals (Lightleap/NC Wireless), and combine that with TSS industry knowledge, in particular a similar project recently undertaken by Warren County.

3. Synthesize and document TSS views on feasibility, cost and schedule.

Current Public Safety Network Status

Person County currently provides public safety communications using a conventional VHF radio network. The network serves the Sheriff, Fire and Emergency Medical Services (EMS). The VHF radio network serves the County and a separate VHF radio network serves the City of Roxboro. The County VHF radio network consists of four (4) sites. One repeater site located in Roxboro provides Transmit and Receive. In addition there are three (3) Voting receiver sites (Receive-only) located at Moriah, Bethel Hill and Ceffo for Sheriff and County Fire.

While the current network provides coverage in the central region of the County, there is no pager coverage in areas along the County line. The Roxboro repeater has been experiencing interference from adjacent radio systems plus the Voting receiver sites have been inoperable due to lack of maintenance over the years. Initial steps to provide corrective maintenance are underway with a vendor. This program is an interim step, however, and does not address the coverage issues.

Public Safety Network Solution

A Simulcast network is recommended to address coverage issues throughout the County using the existing three (3) VHF frequencies. Simulcast uses advanced technology to maximize the coverage with the existing 3 frequencies licensed by the FCC to the County. Initial coverage design studies show that a five (5) site Simulcast system would provide coverage throughout the County, and beyond the county lines to assist resources responding into adjoining counties where they provide mutual aid.

The sites are as follows:

1. The new VIPER tower on Critcher -Wilkerson Road in Roxboro.
2. Bethel Hill School
3. Mt. Tirzah ball field
4. Bushy Fork ball field

5. Woodland Elementary School

Two of the new sites are on School property the other two sites are on County property. The VIPER tower is also on County property. The prime Simulcast site will be located at the 911 Center on Hill Street in Roxboro.

Tower height for the new towers will be 300 feet. In addition, the 4 towers will be constructed to support 50% additional loading to support the broadband Fixed Wireless antennas and 2 cellular carriers. Tower height of 300 ft is recommended to provide adequate antenna separation to mitigate interference. Towers specifications are based on the public safety industry standard which is a more demanding than the cellular industry standard.

Since the task of preparing an RFP to select a vendor and provide Project Management oversight is not a recurring need within Public Safety agencies, the industry standard approach is to outsource this task to a Radio Consultant with the appropriate qualifications. The cost estimate for this exercise is included in this study.

Broadband Network Solution

The broadband network NOC tower will be located in Roxboro on the EMS tower on Barden Street. It will also use 4 of the 5 five Public Safety tower sites:

1. Bethel Hill School
2. Mt. Tirzah ball field
3. Bushy Fork ball field
4. Woodland Elementary School

NC Wireless serves other Counties in NC, but the terrain is different from the terrain in Person County. In addition to the cost estimate supplied in the Broadband RFP response, there will be additional costs for Microcells to reach the remote areas due to the terrain in the County. Fixed wireless systems operate in frequency bands where clear line of sight (LOS) is required to deliver broadband service. Overcoming line of sight obstructions from trees and foliage will require that Microcells are located in the un-served areas. Foliage

variations due to seasonal changes impact broadband speeds and quality of service. These conditions require a Microcell solution to minimize the impact of seasonal change.

Consistent with industry practices, Broadband deployment will take place in two (2) Phases to gain experience with the terrain and subscriber demand.

Phase I will consist of deployment of Broadband equipment at the five (5) public safety sites.

Phase II will be based on deployment of Microcells adjacent to the remote areas to overcome line of sight obstructions. The Microcells will require towers or other vertical assets to reach the remote areas. The cost of the Microcell towers or other vertical assets are not included in this feasibility study.

The cost for Phase II Microcell solution is in addition to the Lightleap/NC Wireless response to the Broadband RFP. To provide a best effort estimate for capital budget planning, the additional cost beyond the cost in the RFP response is based on the assumption of deploying one (1) Microcell for each of the seven (7) un-served areas. The design is not complete and may change as deployment proceeds.

In addition, Person County requested Wireless Research Center of NC to perform noise floor measurements at the five (5) Public Safety sites. Since high levels of interference have been reported at tower sites in Roxboro, TSS recommends that the County should perform noise floor tests. High noise floors resulting from interference will impact the broadband quality of service. The estimated cost for this task is included in this report.

Public Safety Cost Estimate

Based on recent network installations in nearby NC counties, and TSS experience, the following cost estimates have been developed:

Tower Sites **\$2,400,000**

The estimate includes four (4) new 300 foot towers at \$600K each. This includes environmental studies, tower construction, shelters and backup power.

Radio Equipment **\$1,650,000**

The estimate is based on five (5) sites. It includes simulcast repeaters, microwave, antennas, cable feed lines, installation and the necessary 911 Center equipment.

Hire Radio Consultant **\$120,000**

The estimate is based on hiring a Radio Consultant to prepare the RFP, evaluate vendor responses, assist with vendor selection and Contract negotiation and provide Project Management oversight for the construction of the towers and VHF network.

TOTAL **\$4,170,000**

Broadband Cost Estimate (Lightleap/NC Wireless)

The Broadband cost estimate is based on the Lightleap/NC Wireless response to the Person County RFP that was submitted in July 2013. In addition, the cost estimate will include the Microcells required to reach the un-served areas. Finally the cost estimate includes testing of the noise floor by the Wireless Research Center of NC.

BROADBAND COST ESTIMATE**Phase I - Broadband Cost Estimate** **\$96,775**

This cost estimate covers the equipment required at the 5 Public Safety sites. This cost estimate is the broadband grant contribution of 50% of total equipment cost.

Phase II - Broadband Cost Estimate **\$26,260**

This cost includes seven (7) microcells which are additional costs beyond the response to the broadband RFP. This estimate is the broadband grant contribution of 50% of total equipment cost. The estimate does not include towers or other verticals assets for the Microcells.

Noise floor tests by Wireless Research NC **\$50,750****TOTAL** **\$173,785**

Cost Estimate Summary

Cost Element	Person County Expected Expenditure
Public Safety	\$4,170,000
Broadband	\$173,785
TOTAL	\$4,343,785

Key Assumptions

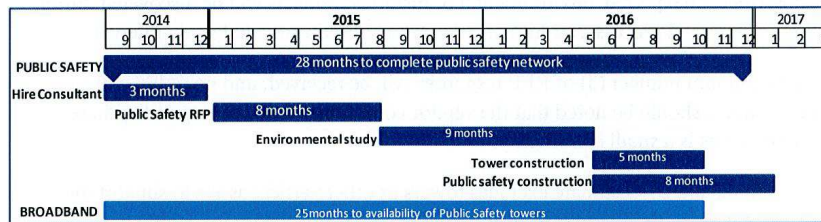
This feasibility study has, out of necessity, made a number of assumptions about the projects studied. It is important to understand these assumptions when using the study for budgeting and scheduling purposes.

1. No serious, unexpected, environmental or historical impacts will be discovered during the site approval process, resulting in an extended Environmental study interval.
2. The minimum number (3) of RFP responses will be received, and no re-bid will be necessary. It should be noted that the vendor community that can respond to these requirements is a small community.
3. The Broadband cost estimate excludes towers or other vertical assets to support the Microcells. Also the Broadband estimate is a best effort estimate for capital budget planning and it may change as the Microcell network is finalized.

Expected Project Schedule

The chart below identifies a conservative, but not worst-case, view of the project schedule. A larger, detailed version is included in Appendix A

Project Timeline



Public Safety Timeline

The Public Safety project is expected to require approximately 28 months of elapsed time to complete based on the currently known parameters and assumptions:

- RFP intervals: Our experience is that they range from 6 to 9 months and the typical is 8. In Warren County the RFP interval was 6 months, but for a smaller project. If the project has to be rebid (for example less than 3 bids received) an additional 6-8 months would be added to the schedule. There is a risk that 3 bids may not be obtained.
- Environmental study: Our experience is that Environmental studies require the longest interval and are the least predictable. The recent VIPER tower interval in Warren County was about 18 months, but it had an additional 7 month interval for FEMA approval required by DHS grant fund conditions, that do not apply here.

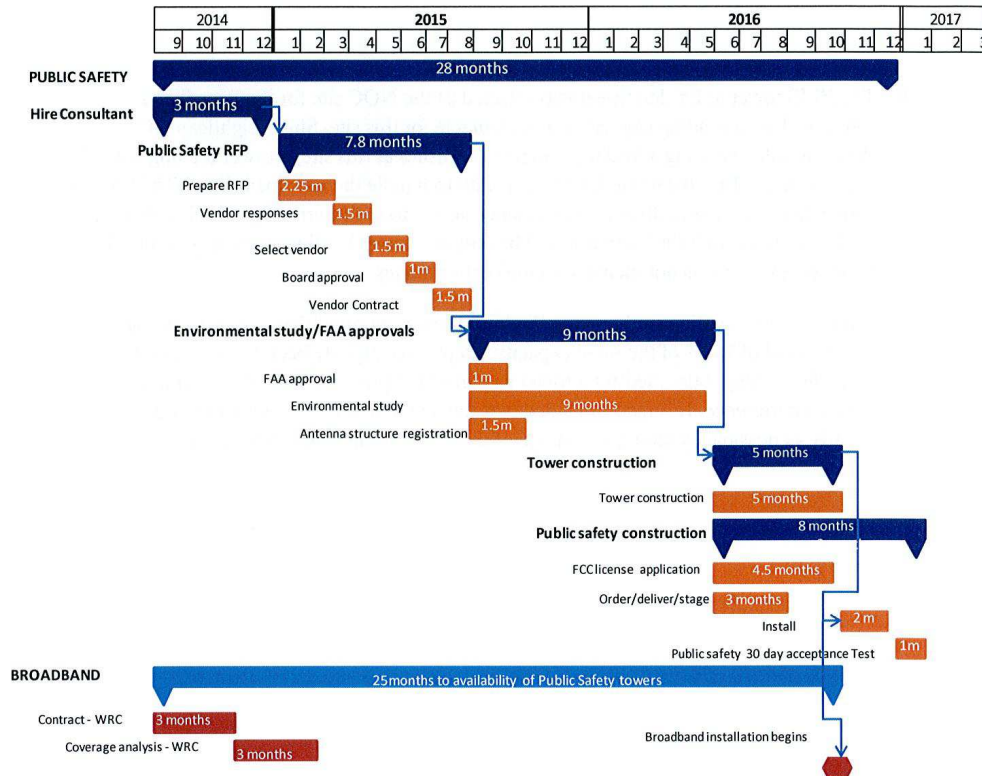
Broadband Timeline

- The Broadband project is expected to require approximately 25 months of elapsed time until the Public safety towers are available.
- The timeline for the microcell tower deployment will be defined after tower assets are available.

Final Observations and Recommendations

- The EMS tower at Barden Street was selected as the NOC site for the Broadband solution. Tower loading capacity is not available for this site. Since Lightleap NC Wireless will be adding additional microwave dishes at this site, a tower loading study is required to confirm the tower has the capacity to handle the new load. The NOC site is a cornerstone of the Broadband network since access to the Internet for all subscribers will be delivered through the EMS tower. The cost of a tower loading study is typically about \$3000 or less. This is not included in the cost estimates.
- A recent tower loading study on the Piedmont tower reported that it was operating with a tower load of 150% of the rated capacity. Steps have already been taken to provide some de-loading of the Piedmont tower as part of the project that is already funded to reduce interference. It is recommended that the de-loading process should be completed as early as possible by taking advantage of the space on the new VIPER tower.

Appendix A - Timeline



Mr. Marum gave the group the following presentation:




Feasibility Study for Person County

- Public Safety/Broadband Cost Estimate -

February 24, 2014

About TSS Partners



- TSS provides telecommunications consulting to Public Safety Enterprise and Service Providers.
- 25+ years of experience in telecom including Public Safety, Cellular and Broadband.
- Founded by senior managers from GARTNER, Nortel, and ATT.
- Formed in 2002 when GARTNER exited telecom consulting.
- Based in Raleigh, NC.

Copyright TSS Partners 2014 www.TSSPartners.com 2


Consulting Services



SERVICES PROVIDED	TECHNOLOGIES COVERED
<ul style="list-style-type: none"> ■ Network upgrades ■ RFP preparation/Project Management ■ Strategic Planning ■ Benchmarking ■ Operational Analysis ■ Market Assessment 	<ul style="list-style-type: none"> ■ Public Safety Radio VHF/UHF 800 ■ Public Safety Broadband (FirstNet) ■ Cellular LTE, CDMA ■ Enterprise Data/Voice upgrades
	<div style="border: 1px solid black; padding: 2px; margin-bottom: 5px;">MARKETS COVERED</div> <ul style="list-style-type: none"> ■ Service Providers ■ Government/Public Safety ■ Business and Consumer

Copyright TSS Partners 2014
www.TSSPartners.com
3

Sample Consulting Engagements



- **RFP preparation** **Warren County, NC**
Prepare RFP and select vendor to improve VHF radio coverage . Project manage network implementation. .
- **Public Safety Radio Modernization Plan** **City of Greensboro:**
Prepare long term plan for modernization of the Public Safety 800Mhz network, P25 upgrade and paging for Fire/EMS.
- **Multiple Public Safety/Broadband studies** **City of Charlotte**
 - Public Safety Voice upgrade,
 - Public Safety Broadband Data plans (FirstNet)
 - City wide internal Broadband Data network upgrade
 - Countywide Voice network upgrade. .
 - Benchmarking and User Fee models,
- **Broadband over Power Line** **Progress Energy**
Assessed market opportunity for Progress Energy Pin the broadband internet market using Broadband over power line (BPL) technology

Copyright TSS Partners 2014
www.TSSPartners.com
4

Person County Feasibility Study
TSS PARTNERS Technology Systems Solutions

OBJECTIVES

- **Supply Feasibility Study covering;**
 - Public Safety network upgrade
 - Broadband for un-served areas using Public Safety towers
- **Provide Cost Estimates for Public Safety and Broadband**
- **Supply Estimated Timeline**
- **List Key Assumptions**

Copyright TSS Partners 2014
www.TSSPartners.com
5

Project Overview - Public Safety
TSS PARTNERS Technology Systems Solutions

■ Current Status

- 4 sites with one (1) repeater site on Hill St in Roxboro
- 3 Voting Receivers at Moriah, Ceppo and Bethel Hill,
- All Voting receivers are inoperable
- Interference on the Hill St tower in Roxboro
- No pager coverage along the County line

Copyright TSS Partners 2014
www.TSSPartners.com
6

TSS Technology
Systems
Solutions
PARTNERS


- 5 site VHF simulcast network
- 4 new towers. 5th site using antenna space on new VIPER tower
- Predicted coverage will reach within and beyond County lines
- Sites : Roxboro VIPER tower, Bethel Hill, Woodland, Mount Tirzah, Bushy Fork
- 300 ft towers with 50% additional loading for Broadband and 2 cellular carriers.

2

TSS Technology
Systems
Solutions
PARTNERS

8

Project Overview Broadband




- **Broadband will be deployed in two Phases**
- **Phase I solution**
 - NOC site at the EMS tower on Barden Street
 - Using antenna space on the 4 new Public Safety towers.
- **Phase II solution**
 - Using Microcells deployed adjacent to the 7 un-served areas
 - Spectrum used for Fixed Wireless requires line-of-sight (LOS)
 - LOS required to overcome obstruction from trees/foliage
 - Not previously quoted in response to RFP
 - Microcell equipment costs included in this study
 - Vertical assets not included in this study
- **Noise Floor test recommended due to reported high interference**
 - High noise floor will degrade Broadband quality of service
 - Cost estimate included in this study.

Copyright TSS Partners 2014

www.TSSPartners.com

9

Broadband Estimated Costs



■ Broadband Phase I (Public Safety sites)	\$96,775
■ Broadband Phase II (Microcell sites)	\$26,260
■ Broadband Noise Floor Tests	\$50,750
■ <u>TOTAL</u>	<u>\$173,785</u>

NOTE 1 : Broadband Phase II estimate excludes Microcell vertical assets.

NOTE 2. Phase I and Phase II costs are the 50% grant contribution portion from the County.

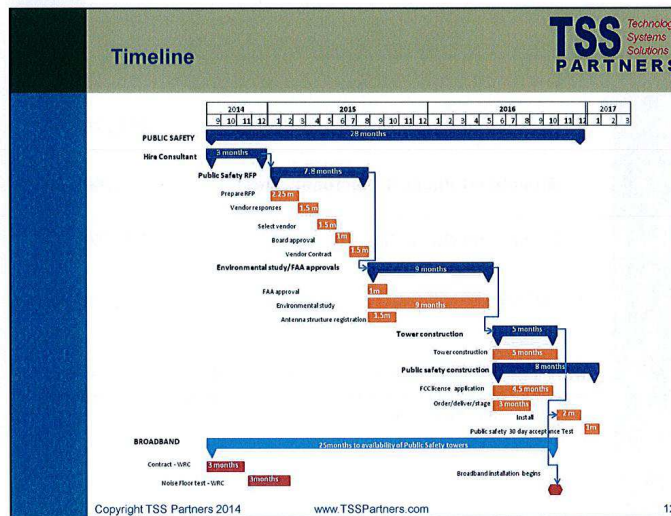
Copyright TSS Partners 2014

www.TSSPartners.com

10

Total Public Safety/Broadband Costs		TSS PARTNERS <small>Technology Systems Solutions</small>
■ Public Safety	\$4,170,000	
■ Broadband	\$173,785	
■ <u>TOTAL</u>	<u>\$4,343,785</u>	

Copyright TSS Partners 2014 www.TSSPartners.com 11



Key Assumptions



- **The Environmental study for tower sites will be completed in 9 months.**
 - No unexpected environmental or historic impacts discovered during site approval process.

- **A minimum of 3 bids will be received**
 - No rebid necessary


- **Broadband Phase II will require towers to support the Microcell solution.**
 - Towers for microcell solution are not included in the feasibility study

Copyright TSS Partners 2014

www.TSSPartners.com

13

Final Observations



- **Tower loading study required on EMS tower to confirm it can support Broadband microwave dishes**
 - EMS tower is NOC site for Broadband.
 - All subscribers will access Internet through Barden St tower
 - De-loading existing antennae on to the VIPER tower may be required

- **Recent tower loading study on Piedmont reported it was operating at 150%**
 - De-loading on to spare space on the VIPER tower recommended.

Copyright TSS Partners 2014

www.TSSPartners.com

14

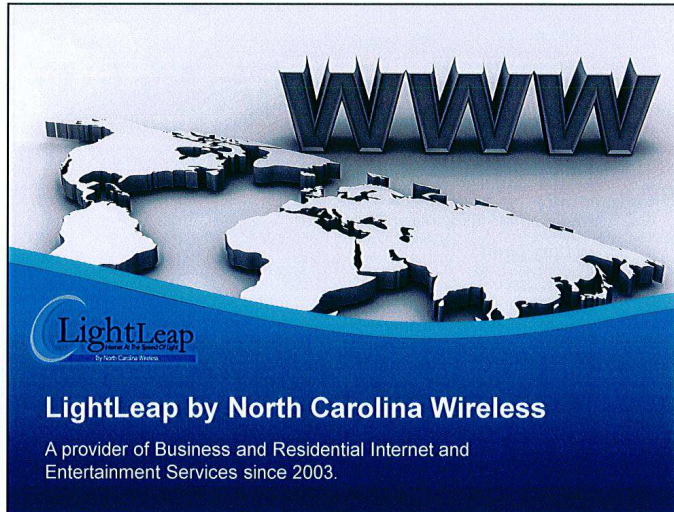
Vice Chairman Jeffers requested more information for the costs to repair the current equipment deficiencies. Tommy Cole, Communications Director stated the age of the current towers with aging equipment coupled with the line of sight obstructions due to the current tower heights are lower than needed. Mr. Marum noted the appropriate tower height for a line of sight without obstruction should be 250-300 feet.

Commissioner Newell questioned the timing of the environmental study as presented noting his desire to have the study completed prior to spending money. Mr. Marum stated the timeline presented is according to industry standard. The timeline indicated the public safety towers to be completed in 28 months and the broadband in 25 months.

BROADBAND PROJECT:

Assistant County Manager, Sybil Tate told the group that LightLeap by NC Wireless was the recommended vendor to provide broadband service to the unserved areas of Person County. Ms. Tate noted LightLeap would install its equipment on the towers that will be built as part of the public safety communication system. Ms. Tate introduced Mr. Joshua Strickland and Mr. Bill Shillito with LightLeap to present information about providing service to the unserved areas of Person County and answer questions about the proposed broadband system.

Mr. Strickland gave the group the following presentation:



Introduction
 Affordable access for everyone. More options for business and commerce.

THE FUTURE CAN'T WAIT

Don't wait. Affordable, Reliable, high-speed Internet is available right now.

LightLeap
Internet At The Speed Of Light
 By North Carolina Wireless

To get connected, call 828-322-1505
www.lightleap.net

UBIQUITI
WORLD NETWORK

LightLeap
Internet At The Speed Of Light
 By North Carolina Wireless

Overview

By the numbers

Service Areas






- Services in 34 Zip Codes
- Services in 7 Counties
- 16 Tower/POP Sites in service area

History / Info

- Founded in 2003
- Offices and NOC in Hickory, NC
- Local Private Ownership
- Members of WISPA and ARIN


Service Lineup

- LightLeap Broadband
- PTP and Fiber/Ethernet over Air
- Landline, VoIP and Hosted PBX Services
- DISH Network TV Services

Success Stories

Here are a few...



Hickory Airport

1 In 2004 we brought Internet Service to the Hickory Airport and FBO.

Service was not available at that time and was very costly to expand using traditional providers.

We enabled 4-6 businesses to operate at the Hickory Airport with Internet services that otherwise would not have been available.

Today in 2014 we still are the only provider available at several locations on the Airport Property.

Avery County

2 Public-Private partnership with Avery County Commissioners, Economic Development & NC Broadband to expand Internet into unserved areas in rural Avery Co.

Phase 1 completed in July 2013. Additional phases in early planning.

Unserved Homes (Tony's Way)

3 Isolated community located near border of Catawba & Lincoln Co. Wireline providers would not expand broadband to them.

NCW installed micro-cell servicing 16 of 18 homes in the community of Tony's Way in Vale, NC since 2012

Case Study

Western Piedmont Transit Authority (WPRTA)

Redundancy and Additional Capacity

1 The WPRTA has been a customer of NCW for years at their Downtown Hickory location.

In September 2011 the WPRTA asked us to provide a cost effective connection for their offices near Conover. Other solutions were more than \$500/mo with lengthy build time.

Redundancy and upload speeds are of major importance.

Solutions

2 NCW provides one of our LightLeap Broadband solutions at 50% of the cost of other option with more flexibility and true geographic diversity to provide true redundancy.

Within days NCW installed one of our Wireless Ethernet Solutions with speeds capable of 20mbps + possible.

Case Study

Catawba County Government

Data and Campus Networking Needs

1 The Catawba County Government was looking for a true backup for their Fiber network between Newton, NC and the location of many of their offices on Tate Blvd in Hickory.

After a move to a new Building from the First Plaza Building on Tate Blvd, Smart Start and More at Four required data connection to the county's network for systems, network and phone service.

Solutions

2 NCW engineered a licensed PIP link for **Catawba County Government** between Hickory and Newton that operates as a true redundant fail-over. The link is rated at 100mbps + full duplex.

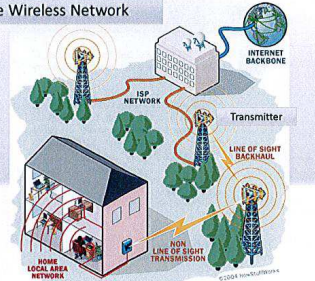
NCW engineered a PIP link for **Catawba County and Smart Start**. After the cost of fiber was quoted and being unsure of how long they would be located at Sweetwater our solution was a great fit. We provide 45mbps + across a dedicated PIP that was a perfect alternative to fiber with more than a 99.99% uptime.

How it Works?

Via highly reliable Wireless PtP and PtMP

- Upstream Providers**
 - Utilize BGP for Redundancy
 - Upstream: RST, Broadplex, MCNC, Others
 - Providers with Geographically Redundant Paths
- Network Core**
 - Gigabit Ethernet
- Wireless Backhaul**
 - 100 mbps up to Gigabit
- Last Mile**
 - Variety of Frequencies
 - Unlicensed and Lightly Licensed

Simple Wireless Network



How it Works?

Highly reliable Wireless PtP and PtMP



Example of NCW Infrastructure:

- Backhauls
- Tower Site
- Network Routers / Switch



The Technology

What does the hardware look like?

rocket M

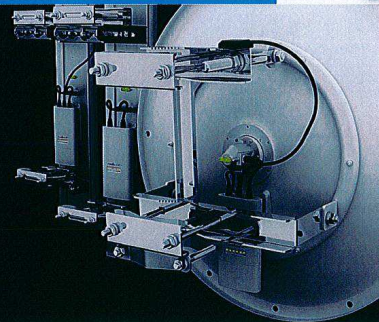


Provides the performance of a carrier class 10 and 40W output amplifier. The Ultraflex output processor provides the best of both worlds for legacy.

900 2.4 3 5
MHz GHz GHz GHz

Available Models:

Rocket M, Rocket M, Rocket M, Rocket M



The Technology

What does the customer hardware look like?

NanoStation M



The NanoStation M combines powerful 40W radio and turbo antenna array performance in a compact form factor.

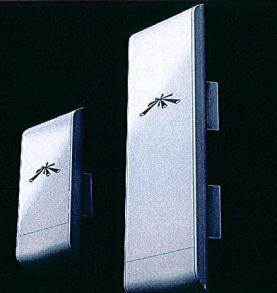
900 2.4 3 5
MHz GHz GHz GHz

Available Models:

NanoStation M, NanoStation M, NanoStation M

Power: 40W up to 16 dBm Power: 40W up to 16 dBm 2X-10M

NanoStation M



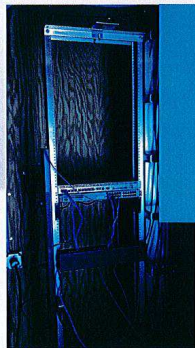
The Technology

Sample Access Point Installation

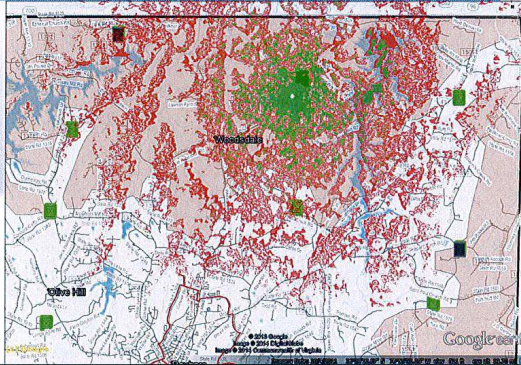


The Technology

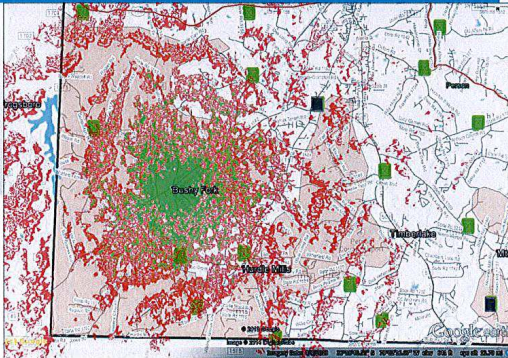
Tower Site



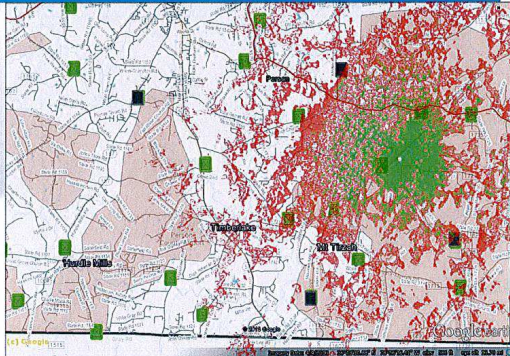
Projected Service Area
Tower – Bethel Hill Site



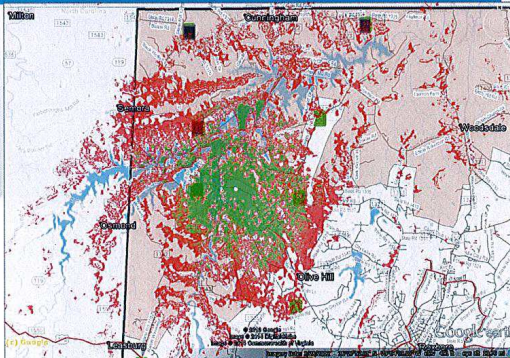
Projected Service Area
Tower – Bushy Fork Site

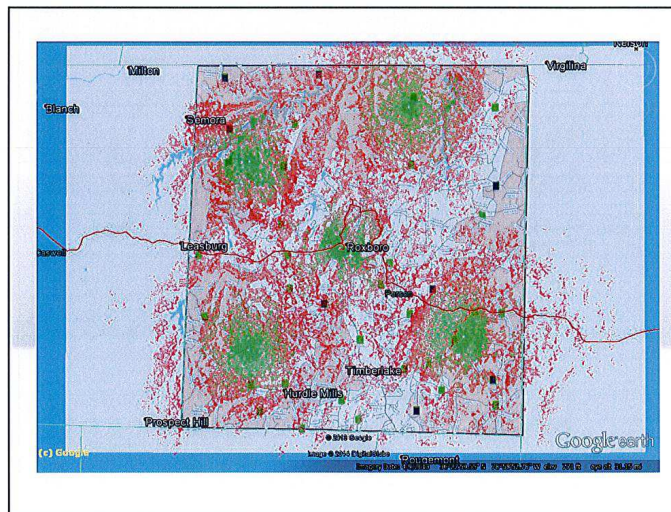
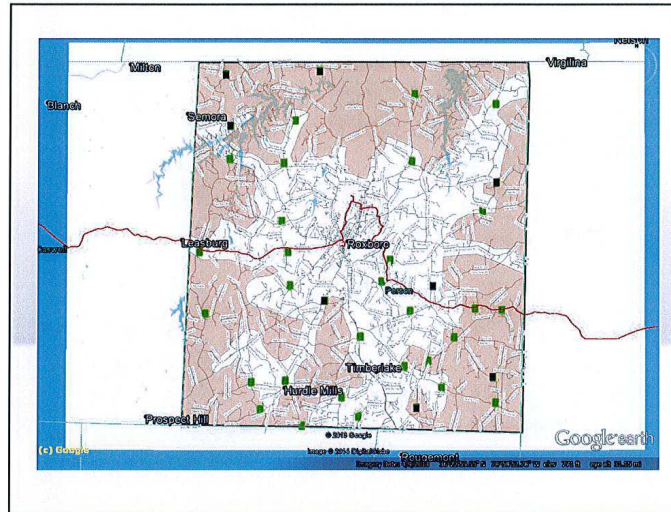


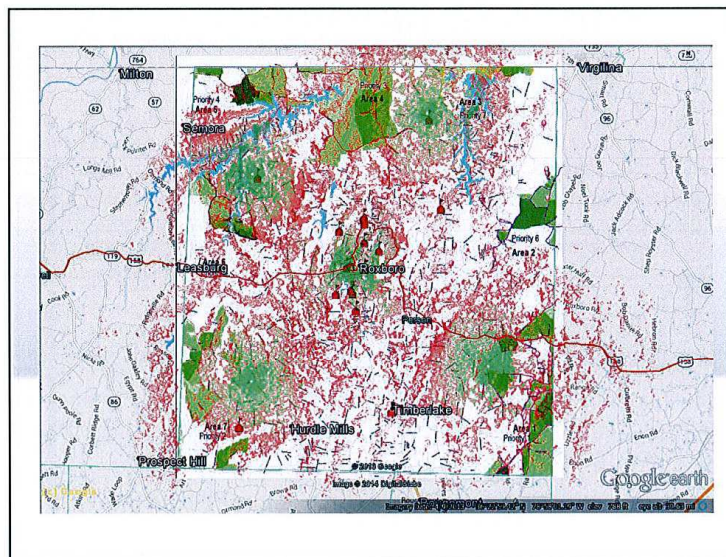
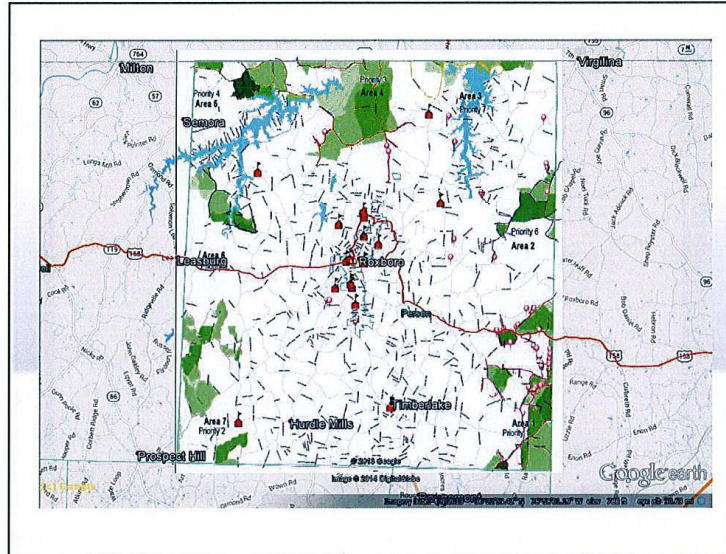
Projected Service Area
Tower – Mt Tirzah Ballfield



Projected Service Area
Tower – Woodland Elementary







Cost Overview Phase 1



Equipment, Engineering Labor and Tower Climbs

1x Roxboro Site (NOC)	\$23,300
5x Distribution at Sites (includes NOC at Barden St Site)	\$10,500 ea.
Total Cost	\$75,800 *

** This is approximate cost. Take into account technology changes, lead time. Assumed that 50% provided by Broadband Grant Program. 5th site takes into account spares*

Subscriber Installations (Projecting up to 250 in unserved areas)

250x Subscriber Cost	\$ 471 ea **
Total Cost	\$117,750 ~

*** Assuming 2.4 GHz CPE, 900MHz CPE is approx \$45 addl ea.*

~ Recommended that this be done on reimbursement basis confirmed by signed affidavit provided by customer that they were previously unserved by at least 4mbps broadband (with no data caps)

Cost Overview Phase 1



Equipment, Engineering Labor and Tower Climbs

Distribution (up to 5) and NOC (Towers)	
Broadband Grant Program	\$37,900 *

Subscriber Installations (Projecting up to 250 in unserved areas)	
Broadband Grant Program	\$58,875 ~
(requesting reimbursement based on documentation)	

Total Person Co. Cash Contribution	approx \$96,775
---	------------------------

Phase 2 Community Micro-cells

Prerequisites (not previously quoted)



We can fill in some unserved areas using micro-cells to repeat service into target areas who have nLoS.

- Perspective Locations based on feasibility and demand.
- Assuming Small Tower or Existing Assets in place already
- Cooperation / Permission from asset owners
- \$1,000/mo of revenues required to justify business case
- Will increase subscriber Receiver cost by approx \$50 per installation

Community Micro-cells

Post Tower Costs (not previously quoted)



Pre-Developed sites provided by local entity

Site should include (Minimum requirement):

- Elevated Asset with Line of Sight to Distribution Tower
- Agreement from Asset/Land Owner (right of way)
- Shelter or NEMA enclosure
- Reliable 110 AC Electricity Access
- 24/7 Maintenance Access

Example total Capital Cost: \$7,500 per site (360 deg)*

*360° coverage may not be required at each

7 Microcells proposed to fill in service in unserved areas based upon demand at total cost of \$52,500

Rates

5G MiMo Residential (sample pricing used in our Hickory network)

5G MiMo \$59.95 (not shown) or \$79.95 most popular plans.

Top end pricing likely to come down ~\$10

No Data Caps on Today's NCW packages

Sat And Cellular Providers have data caps that limit use.

Equipment Fee			
Equipment Required	Standard Receiver	Perfector Upgrade	Boosted Upgrade
Price	\$0	\$50	\$250

Reduced rate equipment purchase prices require \$4.95/mo. Equipment Service Fee that protects the outdoor equipment, outdoor cabling, and power injector. Otherwise full price purchase of equipment is required and is not covered should equipment failure occur. Requires \$0/mo service fee.

Monthly Subscription Fees			
Maximum Download Speed	Maximum Upload Speed	LightLeap 5G MiMo	Standard Installation
Lite 1 mbps	0.5 mbps	\$39.95	\$49
Plus 1.5 mbps	0.75 mbps	-	\$49
Premium 2 mbps	1 mbps	-	\$49
Ultra 5 mbps	1 mbps	\$79.95	\$0
Mega 10 mbps	2 mbps	\$109.95	\$0

Rates




Business Bundles

Standard Business Internet rates are \$10-15/mo more than residential rates. Installation cost is quoted on a case by case basis. SIA


We also offer Dedicated Business Services and typical pricing for these services are \$50-100 per mbps. DIA

In addition we also offer Hosted PBX and LightLeap Voice VoIP Phone Services starting at \$25/mo/line

Business Bundle
Dish Network & LightLeap Internet

Simply add LightLeap Internet to one of the great Dish Network Business packages.



Summary

We are a local resource and asset to communities who want **diversity in the Internet and Data provider options** for homes and businesses. We are in a unique position poised for growth in 2014 and beyond.

We have implemented several Public/Private projects to support underserved Counties and Communities in North Carolina.

We look forward to growing our service offerings and network in local communities and to **work together to establish Private/Public partnerships** to provide better and more options for consumers and to increase our attraction to new businesses moving into the area.

North Carolina Wireless offers our LightLeap brand of Internet Service for homes and businesses in Western North Carolina. We are a local, privately owned organization.

THANK YOU!

Commissioner Puryear spoke of two currently unserved locations in Person County that have advocated for broadband access: 1) Julian Oakley Road and 2) Mann Oakley Road.

Vice Chairman Jeffers stated support of receiving more options for the existing locations that would be implemented in a quicker timeframe.

Assistant County Manager, Sybil Tate stated she would obtain costs from LightLeap for placing equipment on existing water tanks, etc.

Ms. Tate had two follow-up items in regard to the public safety and broadband projects:

- 1) FCC has requested expressions of interest to be filed from cities and counties interested in providing service to unserved rural areas noting providers and local government officials will submit a letter to the FCC; FCC will review various solutions and potentially choosing some for funding via a grant program. It was the consensus of the Board to grant approval for Ms. Tate to submit an expression of interest together with Granville County, as presented.
- 2) Financing options for the public safety and broadband projects may be available through the Piedmont Electric Membership Coop/USDA program which provides 0% interest over ten years. Ms. Tate noted there is a cap for funding at \$2.36 million noting the public safety/broadband projects may be applied for two separate years to encompass the full financing required for the project. It was the consensus of the Board for the Finance Director to move forward with the application process.

It was the consensus of the Board to defer two items to the next scheduled Board meeting on March 17, 2014:

1. Review of Board appointed Boards and Commissions
2. Boards and Committees Appointments

**AN UPDATE AND REQUEST FOR THE PERSON COUNTY SENIOR CENTER
BY THE KERR TAR COUNCIL OF GOVERNMENT:**

Diane Cox, Director of the Kerr-Tar Regional Council of Governments (COG) stated she and other Senior Center staff have looked at many possible temporary locations for the Person County Senior Center. Ms. Cox noted the best option identified is a combination of two locations that are geographically close together (clients could walk from one building to the other to participate in various programs). The two temporary locations are:

1) The Perfect Venue located on Long Avenue and behind the County Office Building has approximately 4,000 square feet---Site could accommodate a congregate nutrition site, space to package home delivered meals, a small fitness center, activities for small groups, reception area, office space that 2 people could share, some storage space for essentials. The site would also accommodate some of the community groups that use the Depot Street location.

2) Auditorium in the County Office Building could be used for exercise classes, line dance classes and some of the activities for larger groups. Ms. Cox stated the Senior Center staff would work closely with the County agencies in scheduling use of the site. There is also one small office that could be used at the County Office Building.

Commissioners Puryear and Newell made contact with Amy Henderson, owner of the Perfect Venue regarding use as a temporary space for the Senior Center as the center prepared to move out of its city-owned Depot Street facility no later than March 21, 2014 due to recent structural analysis indicating problems with the building's roof support system that would be a safety concern. Ms. Cox noted Ms. Henderson has set the lease of the building at \$2,500/month, but is willing to rent at \$1,700/month for a lease term of 12-months. As a non-profit corporation, Ms. Cox noted the COG would provide her with documentation for a tax deductible donation of \$800 a month to make up the difference. Ms. Cox further noted that the Senior Center does not have a budget for payment of a monthly rental fee. Ms. Cox stated the COG has found funds totaling \$500 per month that could be applied to the rent payments. Ms. Cox requested Board consideration to assist in the remaining portion of the monthly rent payment of \$1,200 to lease the Perfect Venue noting she would be making the same request to the City of Roxboro.

Ms. Cox told the Board that the COG and Senior Center are very grateful for the financial assistance provided by Person County noting those funds are allocated as the required match funds for the federal and state grants received to provide many services to the seniors in Person County. Ms. Cox reiterated that no services are intended to be cut or interrupted to the County's most venerable seniors however without financial assistance from the county and city governments, some services may indeed be cut.

Chairman Clayton pointed out that the County currently appropriates \$100,000 in funding to Senior Center programming and the City of Roxboro historically provides the facility for those services. Ms. Cox noted that The Perfect Venue will not accommodate any additional storage for community organizations as done in the past at the Depot site.

Ms. Cox noted storage will be allowed to continue at the Depot site, however no occupancy until the needed structural repairs are completed.

Commissioner Blalock stated the Workforce Development Center may be utilized in the future for possible exercise space.

County Manager, Heidi York noted The Perfect Venue does not have adequate parking for all participants noting the County Office Building adjacent parking lots may be strained at times.

A **motion** was made by Commissioner Puryear, and **carried 5-0** to allocate \$7,200 to the Person County Senior Center to be used to pay a portion of the rent (\$600 per month for twelve months).

Chairman Clayton announced a brief break at 12:49 pm. The meeting was reconvened at 12:54 pm.

CHAIRMAN'S REPORT:

Chairman Clayton noted the issue of environmental pollution related to the Dan River fly ash spill. Chairman Clayton further noted the moratorium of the mining of uranium in Virginia. Chairman Clayton stated had it been a uranium issue, water supply/bottle water would have been seriously affected.

MANAGER'S REPORT:

County Manager, Heidi York reported the following:

- Airport Commission would be meeting on February 27, 2014 at 10:00 am at the Airport.
- The Board has one regularly scheduled meeting on March 17, 2014 at 9:00 am in the County Auditorium noting this date is designated for Local Government Day.
- The Helena Steering Committee will present its recommendations to the Board at the Board's next scheduled meeting on March 17, 2014.
- The Board of Commissioners and the Board of Education will meet jointly in the County Auditorium at 6:00 pm on March 24, 2014.

COMMISSIONER REPORT/COMMENTS:

Commissioner Newell questioned who is at risk for the money spent with the architect for the proposed Recreational/Senior Center to be located at the Huck Sansbury site and the possibility of the having that money paid back. Chairman Clayton stated the Board would have to consult with the County Attorney. County Attorney, Ron Aycock stated the Board should discuss in Closed Session due to any potential for a lawsuit. Commissioner Puryear asked Mr. Aycock if he had reviewed the contract to which Mr. Aycock confirmed affirmatively.

Commissioner Newell stated the Leggett building is a well-constructed 30,000 square ft. facility and the projection according to an email he saw recently is \$1million to purchase and renovate for Senior Center uses. Commissioner Newell stated both the Leggett building and the Workforce Development Center could both be evaluated for Senior Center uses however the Leggett property could yield more for the investment at the same time taking revenue off the tax books. Commissioner Newell questioned the historical building code and how it would affect the current Depot Street site facility.

Commissioner Blalock made the group aware of House Bill 74 noting the Mining and Energy Commission are in study mode and is rushing to approve the rules by October 2014. This timeline includes 60-days of public comment and public hearings with aggressive schedules posted. Commissioner Blalock stated waste management, enforcement, penalty, bonding; permit denial and baseline water testing have not been addressed. Commissioner Blalock noted that counties may be able to pass an ordinance by unanimous vote to be grandfathered before the rules are finalized. The proposed ordinance would outline no exploration nor production waste be allowed in Person County noting all counties are vulnerable for fracking and waste disposal at this time. Commissioner Blalock stated the possibility for such waste (drill cuttings, contaminated with chemicals/radioactive) could be brought to Person County's solid waste landfill. The trend of the Mining and Energy Commission is to lessen mining regulations with more restrictions on the counties to inhibit their efforts. Commissioner Blalock requested Board action on the local level as well as at the state level by Chairman Clayton and Vice Chairman Jeffers.

Commissioner Puryear noted he and Commissioner Newell toured the Leggett building along with other officials from the City and School Board noting his disappointment that the Board could not discuss a joint meeting with the City. Commissioner Puryear noted every commissioner has added an agenda item and it has been a courtesy to accept the addition of agenda items. Commissioner Puryear felt it to be disrespectful for a member of the Board not to be able to add an item to the agenda. Commissioner Puryear directed the Clerk to the Board to include on the next agenda an item to discuss a joint session meeting with the City of Roxboro. Commissioner Puryear added that his dialogue with the City of the Leggett ground level of the building to be used for the Senior Center and the top level a possibility for Early College with lottery funding used for the renovation noting the facility has endless possibilities for a win-win

for the County, the City, as well as enhance the beauty of Uptown Roxboro and it is a part of the Future's project, and a convenient location with close proximity to drug stores. Commissioner Puryear stated before any price is negotiated, the Board should meet with the City and work in partnership.

Commissioner Puryear asked the County Manager about the Code Red test. County Manager, Heidi York stated citizens are encouraged to sign up for emergency notifications and the test went smoothly.

Commissioner Puryear asked Chairman Clayton if he and Vice Chairman Jeffers had a meeting with Tommy Wagstaff and if it was county business, what was discussed.

Vice Chairman Jeffers reminded Commissioner Puryear that he told the County Manager that she works for the entire Board noting he nor Commissioner Newell or the County Manager were authorized to represent the County during their visit to the Ruffin Woody building, further noting the full Board of Commissioners was not invited. Commissioner Puryear stated he and Commissioner Newell are excluded on emails and he did inform the newspaper and the County Manager send out an email about the tour. Vice Chairman Jeffers noted when there is a quorum (three commissioners) there is a public meeting which requires public notice/advertisement and that was not done for the Leggett tour further noting there was no invitation email or a call to invite him to the tour. Vice Chairman Jeffers stated he did not have to explain to anyone when he meets with someone on his private time and he was not representing the County when he met with Tommy Wagstaff. Vice Chairman Jeffers asked Commissioner Puryear if he was representing the County when he talked to Ruffin Woody, or his son-in-law involved with the tour of the Leggett building related to a possible price. Commissioner Puryear stated he was not authorized to represent the County but he felt the County needed a plan noting there was no plan in place. Vice Chairman Jeffers stated there is a plan to have the Senior Center at the Huck Sansbury site with the site plan ready.

CLOSED SESSION #1:

A **motion** was made by Vice Chairman Jeffers, and **carried 5-0** to enter into Closed Session per General Statute 143-318.11(a)(5) to consider the acquisition or lease of real property at 1:11 pm with the following individuals permitted to attend: County Manager, Heidi York, Clerk to the Board, Brenda Reaves, County Attorney, Ron Aycock, Assistant County Manager, Sybil Tate, General Services Director, Ray Foushee, Person Industries Director, Wanda Rogers and Person Industries Assistant Director, Becky Clayton.

A **motion** was made by Commissioner Blalock, and **carried 5-0** to return to open session at 1:21 pm.

Chairman Clayton stated the Board reviewed in Closed Session the acquisition of property owned by Tommy Wagstaff currently used for the Person County Recycling Center. Chairman Clayton called for a motion related to the Offer to Purchase and Contract Agreement between Wagstaff Associates and Person County for 5.30 acres located at 711 Leasburg Road, Roxboro, (Tax Record 27317) at the purchase price of \$850,000 (\$20,000 due diligence fee at effective date with \$830,000 due on settlement) to be paid from the County Fund Balance.

A **motion** was made by Commissioner Blalock, and **carried 3-2** to approve the Offer to Purchase and Contract Agreement between Wagstaff Associates and Person County for 5.30 acres located at 711 Leasburg Road, Roxboro, (Tax Record 27317) at the purchase price of \$850,000 (\$20,000 due diligence fee at effective date with \$830,000 due on settlement) to be paid from the County Fund Balance. Chairman Clayton, Vice Chairman Jeffers and Commissioner Blalock voted in support of the motion. Commissioners Puryear and Newell voted in opposition to the motion.

Commissioner Puryear voiced his opposition to the motion noting the County had the opportunity to buy the same property at a much lower cost last fall when the Board was focused on the Bromma property.

Vice Chairman Jeffers clarified the County was under a purchase agreement at the same time the lower price was extended to the County. Commissioner Puryear added that County was not bound to that contract and could negotiate other contract(s) as pointed out by Mr. Wagstaff's attorney. Chairman Clayton stated the County could not take advantage of the lower price which had an expiration date during the same time the County was in process with the Bromma contract.

Commissioner Newell noted the per capita income information for the last eight to ten years that the Board received from the County Manager indicated the per capita income is the same if not lower. Commissioner Newell stated the County averages spending \$600,000 annually on Person Industries and Recycling and the income is not rising to justify the additional expenses.

Commissioner Newell proposed to close both Person Industries (PI) and the Recycling Center noting the County is not required by law to have these services. Commissioner Blalock countered with information related to services the County provides that do not have revenues, i.e. Dept. of Social Services \$72 million in 2010-2011, Public Safety, Court System. Commissioner Blalock requested the budget include revenues for each line beside expenditures for every department. Commissioner Blalock stated the County provides services and jobs. Commissioner Newell asked Wanda Rogers, Director of PI how people with disabilities are paid. Ms. Rogers stated some people with disabilities receive Supplemental Security Income (SSI) and are paid on the job per a production contract. Commissioner Newell asked Ms. Rogers if those jobs did not exist would the people with disabilities starve noting they will get some type of income by the state. Ms. Rogers stated people with disabilities have a right to have

meaningful work to which Commissioner Newell agreed. Ms. Rogers could not confirm if the jobs did not exist that the people with disabilities would starve but confirmed that some individuals live in substandard situations. Ms. Rogers recalled success stories for people with disabilities to moving from destitute environments to group homes, etc.

Chairman Clayton, the commissioner representative on the Orange-Person-Chatham (OPC) Board, stated Person County took on PI from OPC due to state mental health reform. Chairman Clayton noted people with disabilities may draw a check however if they do not have a job, a certain percentage of them will get into trouble which will affect county services through jail or a mental facility.

Chairman Clayton allowed Ms. Rogers the opportunity to further comment. Ms. Rogers stated when the County took on PI in 2006-2007, they held a great manufacturing contract at the time and the County paid at \$94,000 annually. Ms. Rogers noted PI's goal is and has been to be as self-sufficient as possible. Ms. Rogers further noted the great manufacturing contract was lost to China and recycling was presented and needed in the County so they took that step to service. Ms. Rogers said as the County contribution has increased through the years however, equipment costs are being paid for and that will bring down the County contribution. Ms. Rogers stated the consolidation of PI and Recycling into one facility will increase efficiencies and lower costs.

Vice Chairman Jeffers stated his support for the services to the citizens that pay taxes noting he has not heard any complaints or concerns that PI and Recycling should not be continued. Commissioner Newell guessed that 95% of the population does not have any idea what the County spends on these services.

Chairman Clayton stated the intention is to finance the costs of purchase of the project to replenish the County Fund Balance for the purchase amount. County Manager, Heidi York noted a Reimbursement Resolution will be before the Board for approval within 60 days.

CLOSED SESSION #2:

A **motion** was made by Vice Chairman Jeffers, and **carried 5-0** to enter into Closed Session per General Statute 143-318.11(a)(2) to consult with the County Attorney to preserve attorney-client privilege at 1:37 pm with the following individuals permitted to attend: County Manager, Heidi York, Clerk to the Board, Brenda Reaves, County Attorney, Ron Aycock, and Assistant County Manager, Sybil Tate.

A **motion** was made by Commissioner Blalock, and **carried 5-0** to return to open session at 1:57 pm.

A **motion** was made by Vice Chairman Jeffers, and **carried 3-2** to instruct the County Manager to advertise for a County Planning Director with duties to include stormwater administration as well as for the County Manager to inform the City of Roxboro of the Board's action and to confirm the County will continue to provide office space for current City paid Planning Director in Person County's building and that the current Planning Director will no longer have direct responsibilities for the County. Chairman Clayton, Vice Chairman Jeffers and Commissioner Blalock voted in support of the motion. Commissioners Puryear and Newell voted in opposition to the motion.

Commissioner Puryear stated this action is a setback for City-County relations and noted his opposition to the motion.

Vice Chairman Jeffers stated this opportunity to bring stormwater duties in-house will give county citizens under the stormwater ordinance the ability to contact a county staff at the same time maintaining the one-stop shop to provide office space for the City Planning Director plus two jobs implemented with one employee versus having three staff.

Commissioner Blalock noted the Board's desire to bring stormwater duties in-house for better control.

CLOSED SESSION #3:

A **motion** was made by Commissioner Newell, and **carried 5-0** to enter into Closed Session per General Statute 143-318.11(a)(2) to consult with the County Attorney to preserve attorney-client privilege at 2:00 pm with the following individuals permitted to attend: County Manager, Heidi York, Clerk to the Board, Brenda Reaves, County Attorney, Ron Aycock, and Assistant County Manager, Sybil Tate.

A **motion** was made by Commissioner Blalock, and **carried 5-0** to return to open session at 2:10 pm.

Commissioner Blalock reminded the Board that text messages related to county business are public record noting her opinion that texting during public meetings is a disservice to the public.

ADJOURNMENT:

A **motion** was made by Commissioner Newell, and **carried 5-0** to adjourn the meeting at 2:12 pm.

Brenda B. Reaves
Clerk to the Board

Jimmy B. Clayton
Chairman